



SILVYN® Conduit scissor



Benefits

- Proper and safe cutting of plastic conduits

Application range

- Conduit shears for non-metallic conduit, e.g. parallel corrugated protective conduit.

Suitable conduits

- SILVYN® EL/ELU/ELO/ELT
- SILVYN® HIPROJACKET Page 914
- SILVYN® FPAS Page 875
- SILVYN® HCC Page 888
- SILVYN® RILL PA 6 Page 862
- SILVYN® SI Page 841
- SILVYN® SINUS PA6 Page 895
- SILVYN® SPLIT Page 893
- SILVYN® RILL PA 12 Page 863
- SILVYN® SP Page 842
- SILVYN® SP-PU Page 843

Article number	Article designation	Cutting range Ø (mm)	Pieces / PU
SILVYN® Conduit scissor			
61722285	CC01	0 - 34	1
61722286	CC02	0 - 67	1

Photographs are not to scale and do not represent detailed images of the respective products.

SILVYN® vice



Application range

- For right-angled sawing of protective metal conduits.

Suitable conduits

- SILVYN® HTDL Page 917
- SILVYN® SSUE Page 908
- SILVYN® UI 511 Page 912
- SILVYN® EF Page 918
- SILVYN® OR Page 918
- SILVYN® HCX Page 919
- SILVYN® HFX Page 919
- SILVYN® AS-P Page 897
- SILVYN® EDU-AS Page 898
- SILVYN® EMC AS-CU Page 899
- SILVYN® FPS-EDU Page 900
- SILVYN® FG Page 923

Article number	Article designation	Saw range Ø (mm)	Pieces / PU
SILVYN® vice			
61722280	SAWING DEVICE WZ	18 - 45	1

Photographs are not to scale and do not represent detailed images of the respective products.



SILVYN® coupler



Benefits

- Easy to assemble
- High tensile strength
- Optional extension of all conduits

Application range

- In combination with protective conduit
- All metric conduit glands

Technical data

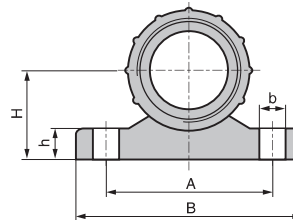
	ETIM 5.0 Class-ID: EC001180 ETIM 5.0 Class-Description: Screw connection for protective metallic hose
	On request M75 PG sizes
	Material Nickel-plated brass
	Temperature range Dependent on the glands used

Article number	Article designation	Metric size	SW wrench size mm	Overall length mm	Outer Ø (mm)	Pieces / PU
SILVYN® coupler						
55510000	16	M16 x 1.5	20	22.5	22.0	10
55510010	20	M20 x 1.5	24	25	26.4	10
55510020	25	M25 x 1.5	29	30	31.9	10
55510030	32	M32 x 1.5	35	32.5	38.5	10
55510040	40	M40 x 1.5	48	34	53.0	2
55510050	50	M50 x 1.5	58	38	63.8	1
55510060	63	M63 x 1.5	70	45	77.0	1
55510070	75	M75 x 1.5	84	45	93.0	

Photographs are not to scale and do not represent detailed images of the respective products.



SILVYN® BW-K-M



SILVYN® BW-M



Benefits

- Space-saving

Application range

- Mechanical engineering
- Plant engineering
- Control cabinet manufacturing
- Used in areas where SILVYN® protective conduits cannot be inserted into a machine or an appliance

Product Make-up

- SILVYN® BW-K-M**
 - Plastic fixing bracket
 - 2 x bore hole for fixation
- SILVYN® BW-M**
 - Steel fixing bracket
 - 2 x bore hole for fixation

Technical data

	ETIM 5.0 Class-ID: EC001458 ETIM 5.0 Class-Description: Fastening angle for hose fitting		Material SILVYN® BW-K-M PP SILVYN® BW-M Steel, passivated
	Colour delivered SILVYN® BW-K-M Grey, RAL 7001		Temperature range SILVYN® BW-K-M -40°C to +100°C

Article number	Article designation	Metric size	A (mm)	B in mm	Overall length, C (mm)	D (mm)	E mm	h mm	H	Hole Ø (mm)	Pieces / PU
SILVYN® BW-K-M											
55000911		20 x 1.5	37.5	50				7.5	20	5.7	50
55000921		25 x 1.5	43	57				8	25	5.7	50
55000931		32 x 1.5	53.5	67				8	27	6.7	50
55000941		40 x 1.5	65.5	79.5				9	33	6.7	50
55000951		50 x 1.5	69.5	86				9.5	36.5	6.7	50
SILVYN® BW-M											
55000531	16		20	50	33.2	40	17				25
55000541	20		20	50	38	40	21				25
55000551	25		20	60	46.9	50	26				25
55000561	32		20	70	56.9	60	33				25
55000571	40		20	80	67	70	41				25
55000572	50		20	90	78.4	80	51				25

Photographs are not to scale and do not represent detailed images of the respective products.



SILVYN® RKS




Benefits


- Fast and easy mounting
- Various applications


Application range

- Plant engineering
- Railway applications
- Automotive industry
- Fastening clamp for cables, conduits and pipes

Technical data

 ETIM 5.0 Class-ID: EC001172
ETIM 5.0 Class-Description:
Coupler for corrugated plastic hoses

 **Material**
Steel, galvanised
Polychloroprene

 **Temperature range**
-35 °C to +100 °C

Article number	Article designation	Metal width (mm)	Width x thickness of rubber profile (mm)	Diameter (mm)	Hole Ø (mm)	Support length (mm)	Pieces / PU
SILVYN® RKS 1							
61825170	6/12	12	15 x 1,2	6	5.3 (M5)	16	100
61825180	8/12	12	15 x 1,2	8	5.3 (M5)	17	100
61825190	10/12	12	15 x 1,2	10	5.3 (M5)	18	100
61825200	12/12	12	15 x 1,2	12	5.3 (M5)	19	100
61825210	13/15	15	18,5 x 1,5	13	6.4 (M6)	23.7	100
61825355	14/15	15	18,5 x 1,5	14	6.4 (M6)	24.2	100
61825365	15/15	15	18,5 x 1,5	15	6.4 (M6)	24.7	100
61825375	16/15	15	18,5 x 1,5	16	6.4 (M6)	25.2	100
61825040	18/15	15	18,5 x 1,5	18	6.4 (M6)	26.2	100
61825052	19/15	15	18,5 x 1,5	19	6.4 (M6)	26.7	100
61825380	20/15	15	18,5 x 1,5	20	6.4 (M6)	27.2	100
61825382	21/15	15	18,5 x 1,5	21	6.4 (M6)	27.7	100
61825050	22/15	15	18,5 x 1,5	22	6.4 (M6)	28.2	100
61825390	23/15	15	18,5 x 1,5	23	6.4 (M6)	28.7	100
61825392	24/20	20	25 x 1,5	24	8.4 (M8)	35	100
61825400	25/15	15	18,5 x 1,5	25	6.4 (M6)	29.7	100
61825402	26/15	15	18,5 x 1,5	26	6.4 (M6)	30.2	100
61825250	28/15	15	18,5 x 1,5	28	6.4 (M6)	31.2	100
61825255	30/15	15	18,5 x 1,5	30	6.4 (M6)	32.2	100
61825257	32/15	15	18,5 x 1,5	32	6.4 (M6)	33.2	100
61825259	34/15	15	18,5 x 1,5	34	6.4 (M6)	34.2	100
61825260	35/15	15	18,5 x 1,5	35	6.4 (M6)	34.7	100
61825262	36/20	20	25 x 1,5	36	8.4 (M8)	41	100
61825264	38/20	20	25 x 1,5	38	8.4 (M8)	42	100
61825295	40/20	20	25 x 1,5	40	8.4 (M8)	43	100

Photographs are not to scale and do not represent detailed images of the respective products.