



Order key



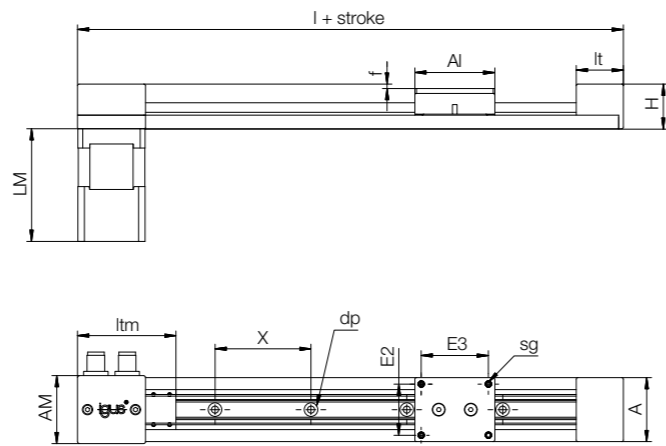
Order example

ZLN-40

Toothed belt axis

Installation size

- Motor can now be mounted on the bottom as well as on top
- Low-profile, 27mm height
- Vertical load from 30N
- Ready-to-install with NEMA stepper motors or BLDC/DC motors
- Delivery from 24 hours

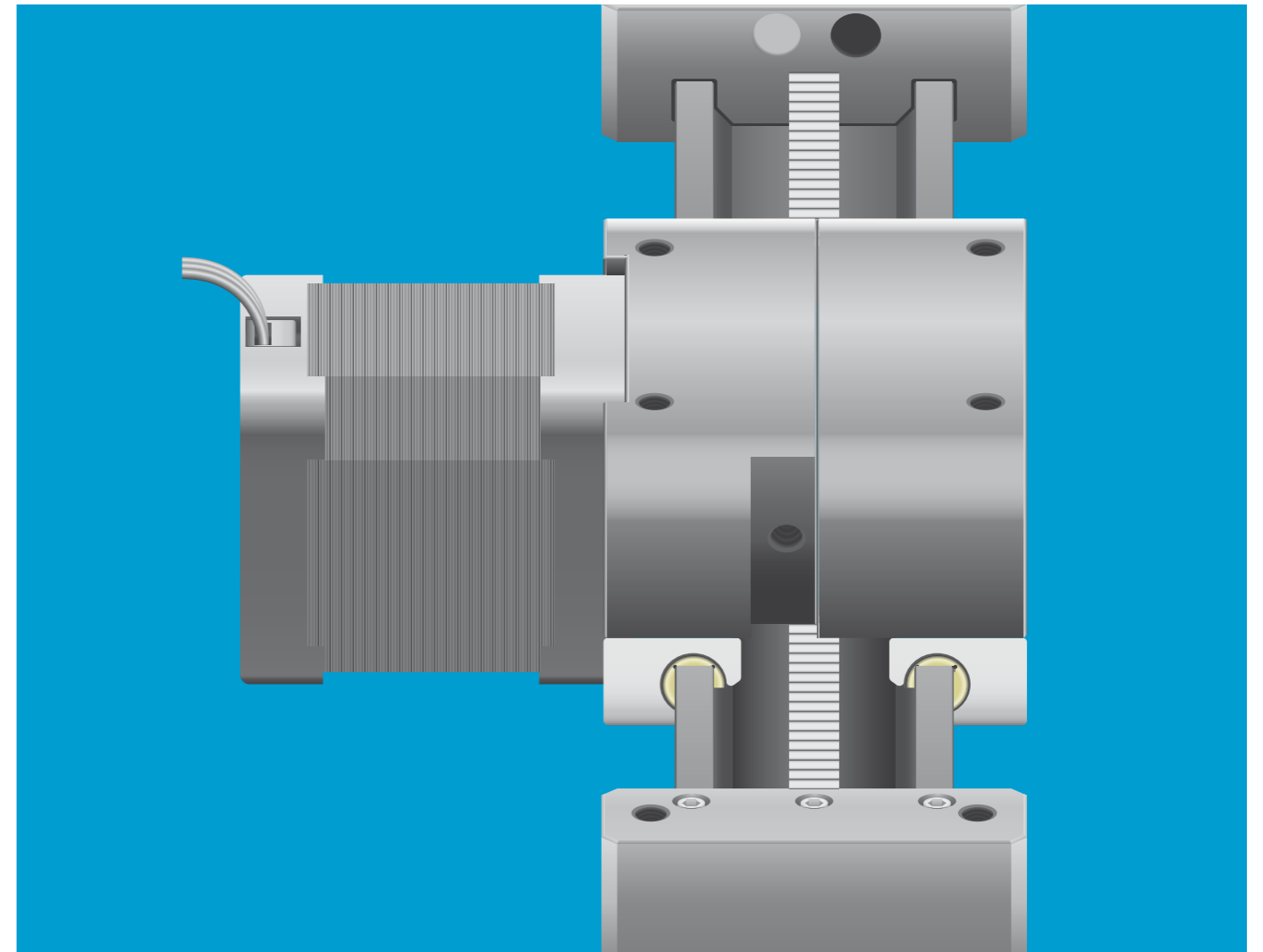


Technical data

Part No.	Max. stroke length [mm]	Weight [kg]	Additional [kg] (per 100mm)	Max. static load capacity		Shaft end support material [Nm]
				Axial [N]	radial [N]	
ZLN-40	750	0.24	0.05	30	80	0.15

Dimensions [mm]

Part No.	A	AI	H	X	E2	E3	AM	LM	lt	ltm	dp	sg	l	v	f
ZLN-40	40	50	28	60	32	42	42.5	70	30	61.5	4.5	M3	141.5	60	2.8



drylin® electric drive technology – Cantilever axis

High dynamics

Drive: Rack or toothed belt

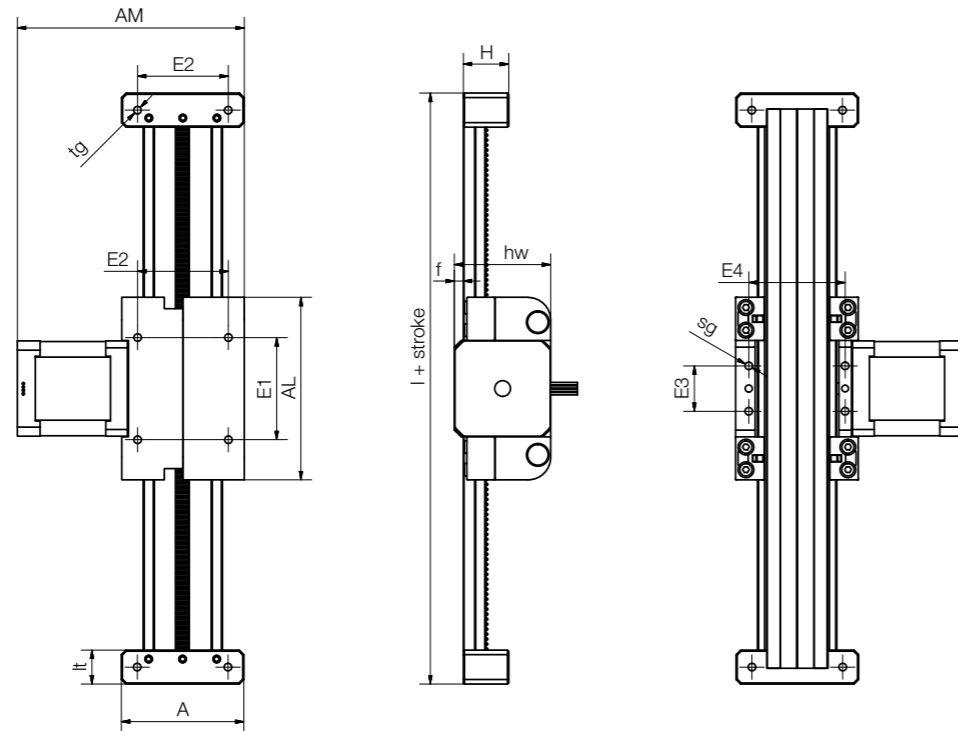
Lightweight design

For z-axis in multi-axis gantries

Lubrication and maintenance-free



- Direct force transfer via rack
- Compact structure
- Handling for loads up to 10N
- Available accessories ► **Page 1503**
- **Available with motor**



Technical data

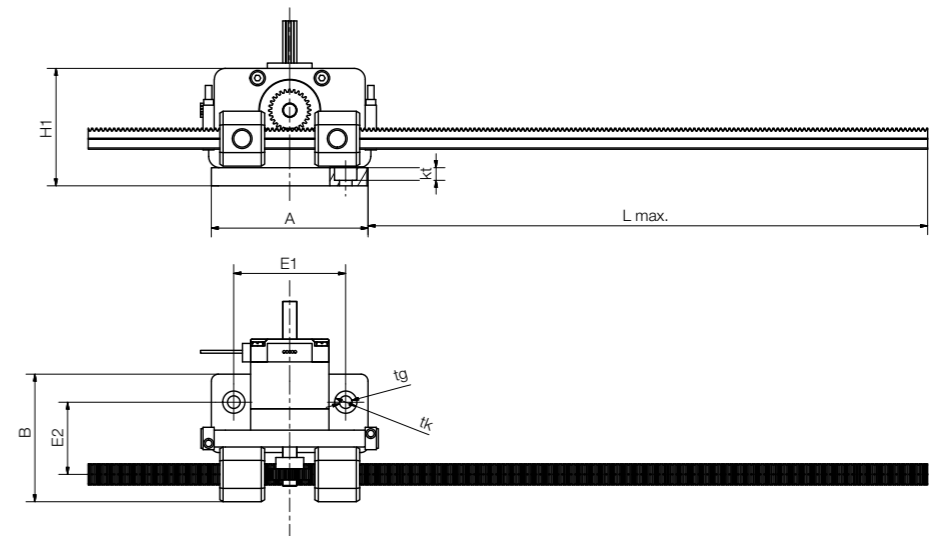
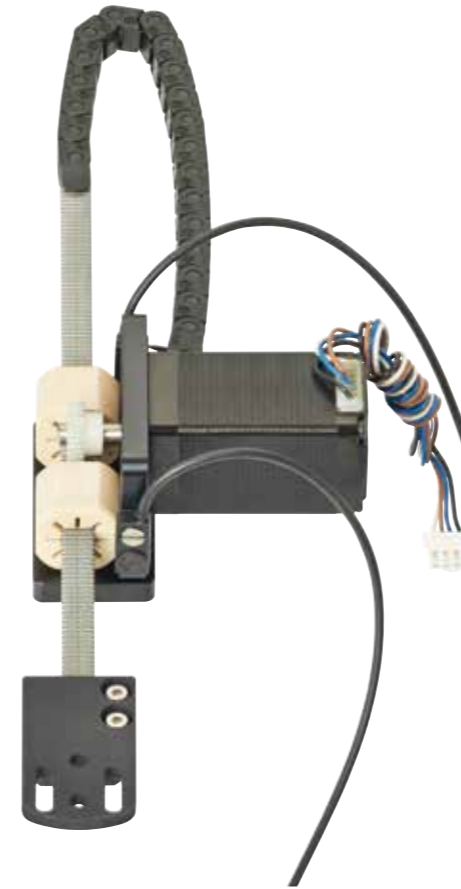
Part No.	Stroke length [mm]	Weight [kg]	Additional (per 100mm)	Max. feed rate [mm/rev]	Max. load axial [N]
GRW-0630-A	150	0.5	0.1	44	10
GRW-0630-B	300	0.5	0.1	44	10

Dimensions [mm]

Part No.	A	Al	H	E1	E2	E3	E4	I	lt	hw	f	AM ¹³¹⁾	tg	sg
	-0.3			+0.15	+0.15									
GRW-0630-A	54	80.5	20	45	40	20	42.5	110.5	15	42.5	4	100.0	M4	M4-8
GRW-0630-B	54	80.5	20	45	40	20	42.5	110.5	15	42.5	4	121.4	M4	M4-8

¹³¹⁾ Depending on the type of motor

- Toothed, hard-anodised, corrosion-resistant square hollow section
- Loads up to 500g with a speed of up to 0.7m/s
- iglidur® J plain bearings
- Drive: NEMA11 stepper motor with gear wheel



Dimensions [mm]

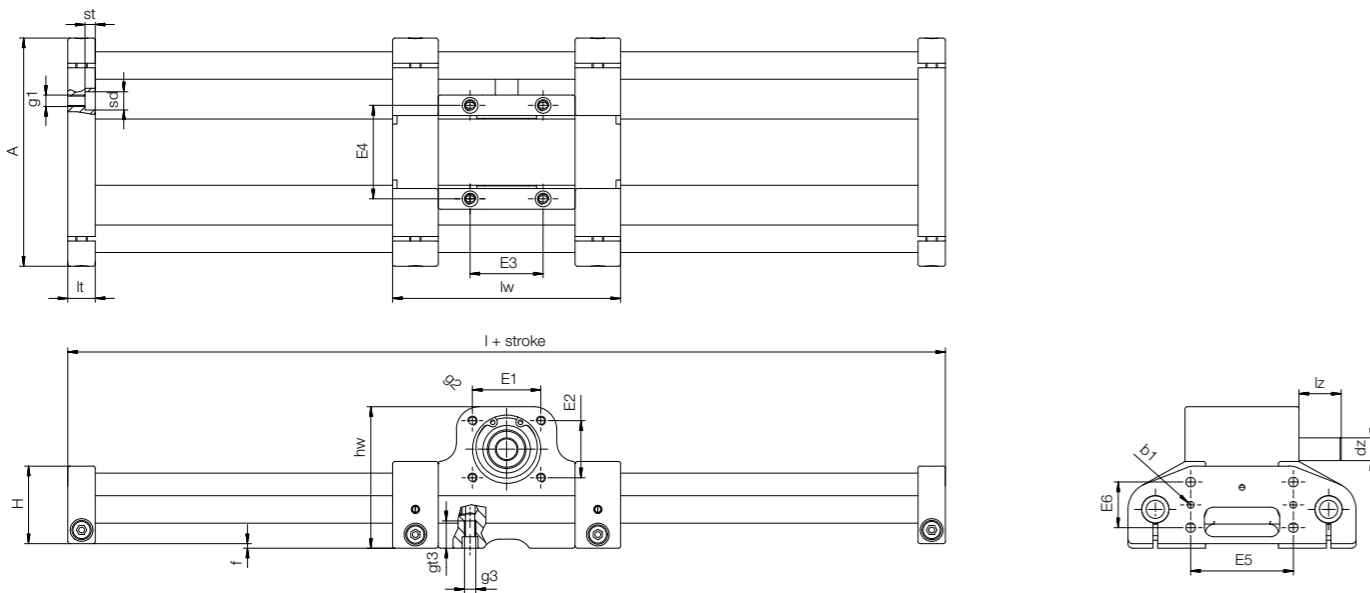
Part No.	F	v	L	A	H1	E1	E2	B	tg	tk	kt	Q	D2
	[N]	[m/s]	Max.										
GRQ-10-A-56-120-11-L-01-000	5	0.7	200	56	42	40	26	46	4.5	8	4.5	7.5	22



- Light z-axis for strokes up to 500mm
- Axis weight of only 1.45kg with 500mm stroke
- Made from aluminium and plastic
- Dynamic mass of only 0.9kg enables fast operation
- Ideal for linear robots
- Direct rack drive
- Torsionally rigid due to drylin® AWMR aluminium hollow shafts
- Lubrication-free and maintenance-free due to drylin® R liners

Typical application areas:

- Handling
- Sprue pickers
- Room linear robots
- Lifting equipment
- Lab automation



Technical data

Part No.	Max. stroke length [mm]	Transmission [mm/rev]	Tooth profile	Weight without stroke [kg]	Max. static load capacity axial [N]
GRR-1280	750	72.26	Module 1	0.86	50

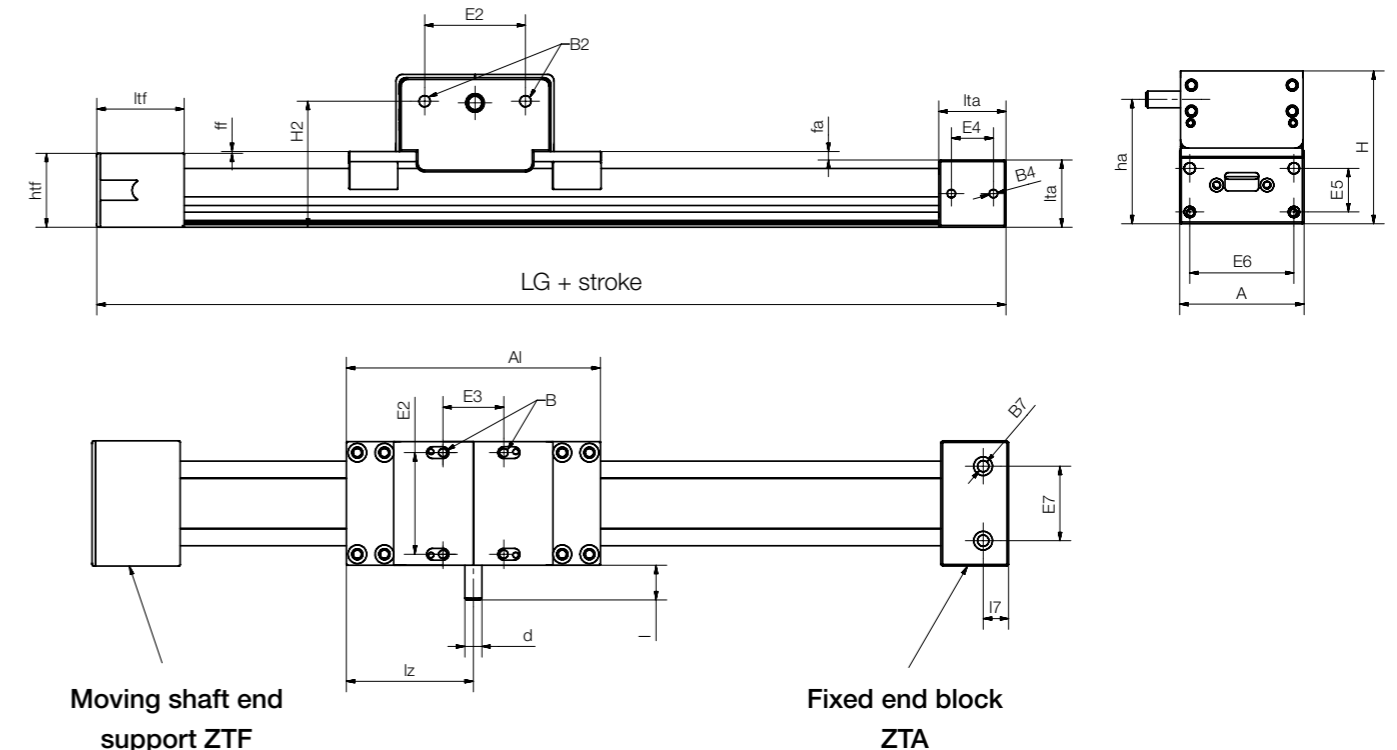
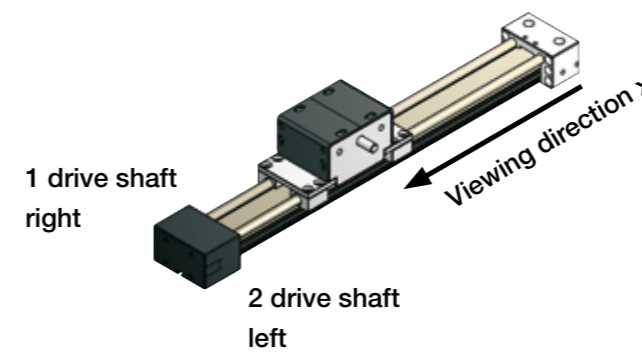
Dimensions [mm]

Part No.	L	A	H	lw	hw	lz	dz	f	lt	E1	E2	g2
GRR-1280	124	100	34	100	62	18	10	2	12	30	25	M4-10

Part No.	E3	E4	g3	gt3	E5	E6	g1	sd	st	b1
GRR-1280	32	41	M5	12	45	20	M5	8	4.5	3



- Fixed drive unit
- Hard-anodised aluminium axis profile
- Lightweight
- Max. stroke 1,000mm
- Max. axial load 50N
- Permissible load for carriage $M_{y,max}$: 15Nm



Dimensions [mm]

Part No.	A	H	H2	LG	Al	ha	d	l	l7	lz	E2	E3
ZAW-1040	-0.3	91	75	242	±0.3	±0.1	h9	+1	15	75	±0.15	±0.15

Part No. Connecting dimensions	B	B2	htf	ltf	ff	fa	lta	E4	B4	B7	E5	E6	E7
ZAW-1040	-0.3	M6	44	52	±0.3	±0.1	h9	±0.1	±0.15	M6	±0.15	62	44



Cantilever axis with ball bearings

ZAW-1040-02-S-150-L-500

Cantilever axis	Installation size	Type	Design	Carriage length [mm]	Drive pin	Stroke length

Options:
Design
 S = Standard
Drive pin
 L = Drive pin left
 R = Drive pin right
 L/R = Drive pin on both sides

Stroke length
 Max. 1,000mm