

# drylin® W profile guides | Product range

Linear guides – lightweight, non-metallic, strong and X-ray transparent

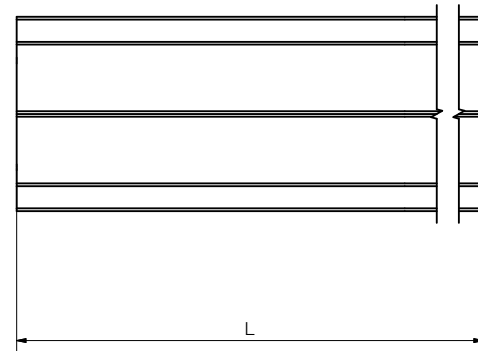
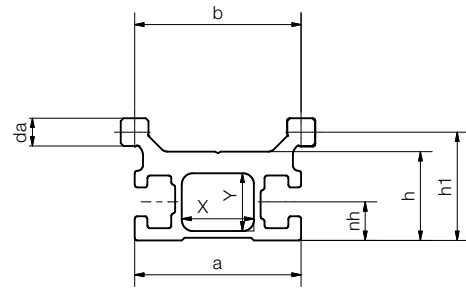


## Order key

Type	Dimensions [mm]/Type
------	----------------------

W S P C-06-30-1000

drylin® W	Rail	Plastic	Carbon fibre	Shaft Ø	Rail width	Rail length
-----------	------	---------	--------------	---------	------------	-------------



### Technical data – guide rail

Part No.	F max. radial		Weight	I <sub>y</sub>	I <sub>z</sub>
	stat.	dyn.			
	[N]	[N]	[g/m]	[mm <sup>4</sup> ]	[mm <sup>4</sup> ]
WSPC-06-30	300	60	410	30,391	11,674

### Dimensions [mm] – guide profile

Part No.	a	b	da	h	h1	nh	X	Y	L
WSPC-06-30	30	30	-0.1	16	19.5	7	13	10	3,000

# drylin® W profile guides | Product range

Linear guides – lightweight, non-metallic, strong and cost-effective

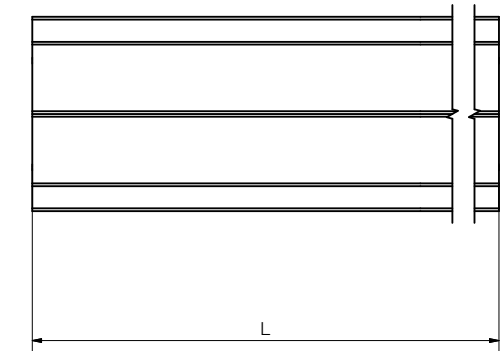
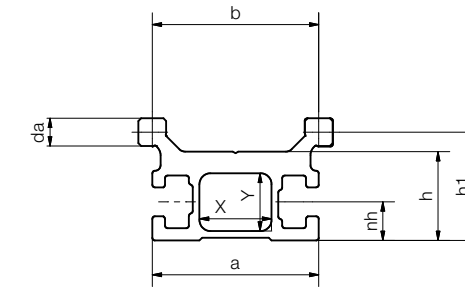


## Order key

Type	Dimensions [mm]/Type
------	----------------------

W S P G-06-30-1000

drylin® W	Rail	Plastic	Fibreglass	Shaft Ø	Rail width	Rail length
-----------	------	---------	------------	---------	------------	-------------



### Technical data – guide rail

Part No.	F max. radial		Weight	I <sub>y</sub>	I <sub>z</sub>
	stat.	dyn.			
	[N]	[N]	[g/m]	[mm <sup>4</sup> ]	[mm <sup>4</sup> ]
WSPG-063001	200	50	505	30,391	11,674

### Dimensions [mm] – guide profile

Part No.	a	b	da	h	h1	nh	X	Y	L
WSPG-063001	30	30	-0.1	16	19.5	7	13	10	2,000

### Dimensions [mm] – complete system

Part No.	H	A1	A	A2	C	C2
WSPG-063001	30	12	52	45	60	51