

Technical data and dimensions [mm]

Part No.	Mk	Vx	Kx	Vz	Kz	Dk	Min. holding force ⁶⁷⁾	Min. tightening torque
WHKA-10 ⁶⁶⁾	M6	50	33	8	28	20	30N	0.8Nm
WHKA-16 ⁶⁶⁾	M8	72	41	10	31	28	60N	1.5Nm
WHKA-20 ⁶⁶⁾	M8	90	62	10	31	28	70N	1.5Nm
WHKA-25 ⁶⁶⁾	M8	96	65	12	31	28	70N	1.5Nm

⁶⁷⁾ Condition: dry rail surface

⁶⁶⁾ The manual clamp is also available assembled as a complete carriage (suffix "-HKA", order example: WW-10-40-10-HKA). Dimensions complete carriage WWQ ► Page 995

Accessories: Aluminium manual clamp

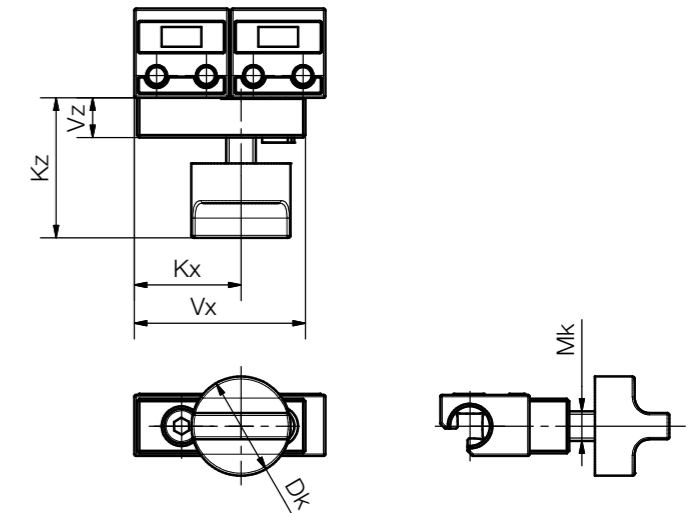


Technical data and dimensions [mm]

Part No.	Mk	Vx	Kx	Vz	Kz	Dk	Min. holding force ⁶⁷⁾	Min. tightening torque
WHKA-10-AL ⁶⁸⁾	M6	50	33	8	28	20	30N	0.8Nm
WHKA-16-AL ⁶⁸⁾	M8	72	41	10	31	28	60N	1.5Nm
WHKA-20-AL ⁶⁸⁾	M8	90	62	10	31	28	70N	1.5Nm
WHKA-25-AL ⁶⁸⁾	M8	96	65	12	31	28	70N	1.5Nm

⁶⁷⁾ Condition: dry rail surface

⁶⁸⁾ The manual clamp is also available assembled as a complete carriage (suffix "-AL-HKA", order example: WW-10-40-10-HKA). Dimensions complete carriage WWQ ► Page 995



Technical data and dimensions [mm]

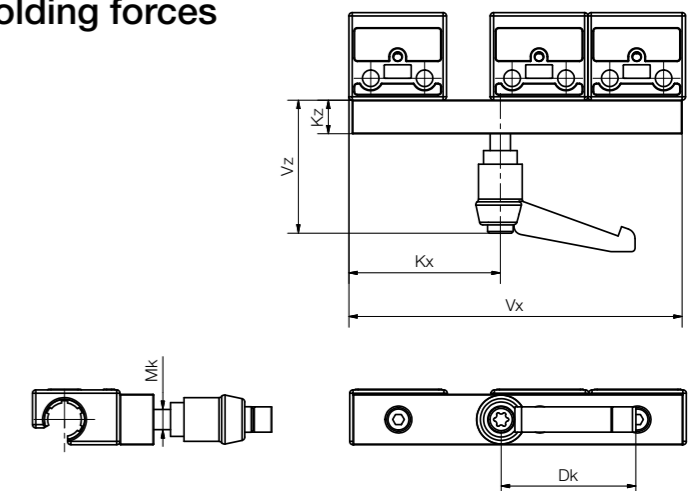
Part No.	Mk	Vx	Kx	Vz	Kz	Dk	Min. holding force ⁶⁷⁾	Min. tightening torque
WHKAQ-06 ¹³³⁾ ¹³⁷⁾	M6	34.5	21.5	8	28	20	30N	0.8Nm
WHKAQ-10 ¹³⁷⁾	M6	50	33	8	28	20	30N	0.8Nm
WHKAQ-16 ¹³⁷⁾	M8	72	41	10	31	28	60N	1.5Nm
WHKAQ-20 ¹³⁷⁾	M8	90	62	10	31	28	70N	1.5Nm

⁶⁷⁾ Condition: dry rail surface

¹³³⁾ Aluminium version available, suffix "-AL"

¹³⁷⁾ The manual clamp is also available assembled as a complete carriage (suffix "-HKAQ", order example: WW-06-30-06-HKAQ). Dimensions complete carriage WWQ ► Page 990

Accessories: Manual clamp for higher holding forces



Technical data and dimensions [mm]

Part No.	Mk	Vx	Kx	Vz	Kz	Dk	Min. holding force ⁶⁷⁾	Min. tightening torque
WHKD-1010 ⁶⁹⁾	M6	100	45	40	10	40	70N	2.5Nm
WHKD-1015 ⁶⁹⁾	M6	150	95	40	10	40	70N	2.5Nm
WHKD-1615 ⁶⁹⁾	M8	150	81	40	12	40	90N	3.5Nm
WHKD-1620 ⁶⁹⁾	M8	200	131	40	12	40	90N	3.5Nm
WHKD-2015 ⁶⁹⁾	M8	150	63	40	12	40	90N	3.5Nm
WHKD-2020 ⁶⁹⁾	M8	200	113	40	12	40	90N	3.5Nm

⁶⁷⁾ Condition: dry rail surface

⁶⁹⁾ The manual clamp is also available assembled as a complete carriage (suffix "-HKD", order example: WW-10-40-10-HKD). Dimensions complete carriage WWQ ► Page 995