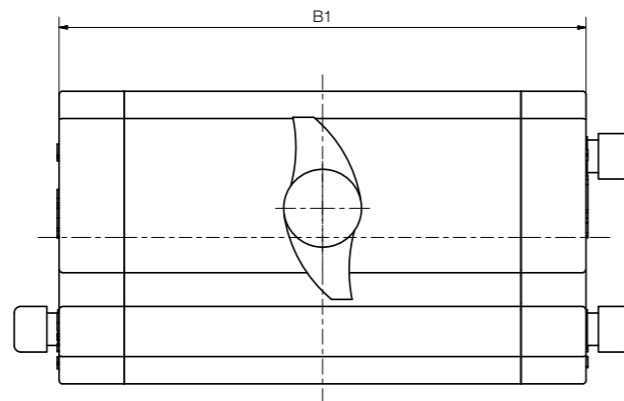
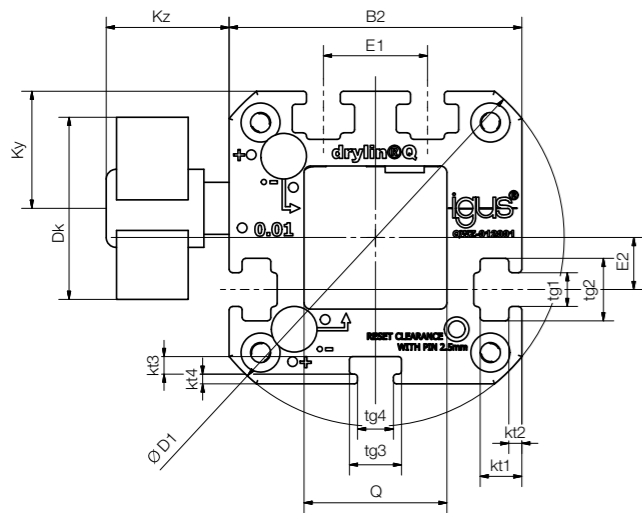




Type	Size	Options
------	------	---------

Q W E - 01 - 20 - HKA

Square	Linear carriage	Adjustable	Standard design	Installation size	Manual clamp
---------------	-----------------	------------	-----------------	-------------------	--------------



Dimensions [mm]

Part No.	Weight [g]	M max. [Nm]	B1	B2	D1	Q	E1	E2	tg1	tg2	tg3	tg4
QWE-01-12-HKA	-	-	80	34	44	12	12	6	5.5	8	8	-
QWE-01-20-HKA	215	10	81	45	58	20	16	8	5.2	9.6	8	5.5

Part No.	kt1	kt2	kt3	kt4	Dk	Ky	Kz
QWE-01-12-HKA	-	-	3	1.25	18	14	19
QWE-01-20-HKA	6.4	2	2.7	1.5	28	18	19

i The manual clamp thread was developed for simple tasks. The creep behaviour of the clamped plastic causes a reduction in clamping force over time (up to 70%). Therefore no safety-relevant parts may be clamped. Please contact our technical consultant, if you require other options for the clamping.

Can be combined with:



AWMQ-20

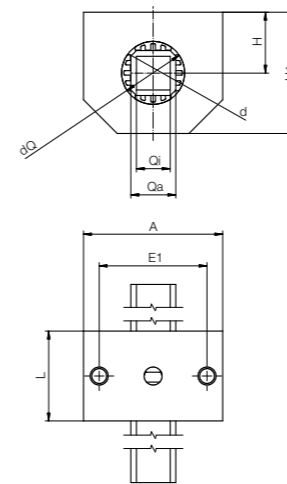


Type	Size
------	------

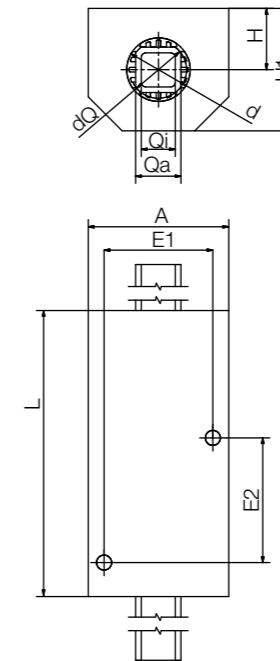
Q J R M T - 05 - 20

Square	iglidur® J	Closed design	Metric	Tandem (optional)	Compact design	Installation size
---------------	------------	---------------	--------	-------------------	----------------	-------------------

QJRM-05-20



QJRM T-05-20



Technical data [mm]

Part No.	Weight [kg]	Mx [Nm]	Surface pressure	
			dynamic [N]	static [N]
QJRM-05-20	0.25	5	1,500	10,500
QJRM T-05-20	0.55	10	1,500	10,500

Dimensions [mm]

Part No.	A	H	H1	dQ	Qa	Qi	E1	E2	d	L
		±0.02					±0.15	±0.15		
QJRM-05-20	62	27	54	25	20	15	48	-	28	40
QJRM T-05-20	62	27	54	25	20	15	48	55	28	85

Can be combined with:



AWMQ-20