

Order key

Type	Size
<b>R J U M-01-10</b>	
Closed	Inner Ø d1
iglidur® J	
Liner	
Metric	
Standard	

● Secured by circlips



<sup>78)</sup> According to igus® testing method ► Page 1146

<sup>81)</sup> Ø < 10mm use press-fitted sleeve plain bearings

<sup>82)</sup> Design tips ► Page 1078

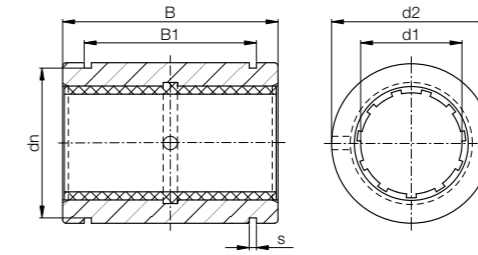
Please note: Installation instructions ► Page 1079

### Dimensions [mm]

d1	d2	B	B1	s	dn	Part No.
	H7	h10	H10	H10	h10	
5	12	22	14.2	1.10	11.5	RJZM-01-05 <sup>81)</sup>
6	12	22	14.2	1.10	11.5	RJZM-01-06 <sup>81)</sup>
8	16	25	16.2	1.10	15.2	RJZM-01-08 <sup>81)</sup>
10	19	29	21.6	1.30	17.5	RJUM-01-10
12	22	32	22.6	1.30	20.5	RJUM-01-12
16	26	36	24.6	1.30	24.2	RJUM-01-16
20	32	45	31.2	1.60	29.6	RJUM-01-20
25	40	58	43.7	1.85	36.5	RJUM-01-25
30	47	68	51.7	1.85	43.5	RJUM-01-30
40	62	80	60.3	2.15	57.8	RJUM-01-40
50	75	100	77.3	2.65	70.5	RJUM-01-50
60	90	125	101.7	3.15	86.5	RJUM-01-60

### Technical data

Part No.	d1 tolerance <sup>78)</sup> [mm]	Fmax. dynamic <sup>82)</sup> p = 5MPa		Fmax. static <sup>82)</sup> p = 35MPa		Weight [g]
		[N]	[N]	[N]	[N]	
RJZM-01-05 <sup>81)</sup>	+0.025 +0.060	525	3,675	3,675	5	
RJZM-01-06 <sup>81)</sup>	+0.025 +0.060	525	3,675	3,675	5	
RJZM-01-08 <sup>81)</sup>	+0.032 +0.070	960	6,720	6,720	9	
RJUM-01-10	+0.030 +0.088	725	5,075	5,075	14	
RJUM-01-12	+0.030 +0.088	960	6,720	6,720	21	
RJUM-01-16	+0.030 +0.088	1,440	10,080	10,080	28	
RJUM-01-20	+0.030 +0.091	2,250	15,750	15,750	49	
RJUM-01-25	+0.030 +0.091	3,625	25,375	25,375	108	
RJUM-01-30	+0.040 +0.110	5,100	35,700	35,700	162	
RJUM-01-40	+0.040 +0.115	8,000	56,000	56,000	334	
RJUM-01-50	+0.050 +0.130	9,000	87,500	87,500	579	
RJUM-01-60	+0.050 +0.140	12,000	120,000	120,000	1,070	



Order key

Type	Size
<b>R J U M-11-10</b>	
Closed	Inner Ø d1
iglidur® J	
Liner	
Metric	
Precise	

● Max. bearing clearance reduced by 50%

● Secured by circlips



<sup>78)</sup> According to igus® testing method ► Page 1146

<sup>82)</sup> Design tips ► Page 1078

Please note: Installation instructions ► Page 1079

### Dimensions [mm]

d1	d2	B	B1	s	dn	Part No.
	H7	h10	H10	H10	h10	
10	19	29	21.6	1.30	17.5	RJUM-11-10
12	22	32	22.6	1.30	20.5	RJUM-11-12
16	26	36	24.6	1.30	24.2	RJUM-11-16
20	32	45	31.2	1.60	29.6	RJUM-11-20
25	40	58	43.7	1.85	36.5	RJUM-11-25
30	47	68	51.7	1.85	43.5	RJUM-11-30
40	62	80	60.3	2.15	57.8	RJUM-11-40
50	75	100	77.3	2.65	70.5	RJUM-11-50

### Technical data

Part No.	d1 tolerance <sup>78)</sup> [mm]	Fmax. dynamic <sup>82)</sup> p = 5MPa		Fmax. static <sup>82)</sup> p = 35MPa		Weight [g]
		[N]	[N]	[N]	[N]	
RJUM-11-10	+0.000 +0.058	725	5,075	5,075	14	
RJUM-11-12	+0.000 +0.058	960	6,720	6,720	21	
RJUM-11-16	+0.000 +0.058	1,440	10,080	10,080	28	
RJUM-11-20	+0.000 +0.061	2,250	15,750	15,750	49	
RJUM-11-25	+0.000 +0.061	3,625	25,375	25,375	108	
RJUM-11-30	+0.000 +0.075	5,100	35,700	35,700	162	
RJUM-11-40	+0.000 +0.080	8,000	56,000	56,000	334	
RJUM-11-50	+0.000 +0.090	12,500	87,500	87,500	579	

Can be combined with:



Available with drylin® liners (optional: J200/A180):

