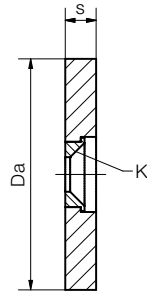
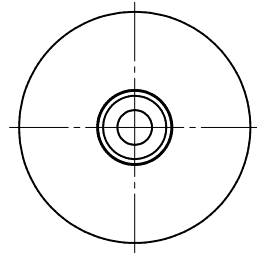


drylin® R sliding discs | Product range

Large force displacement on different surfaces



Order key

Type	Size
Slide disc	RSD J-40-06
Material	iglidur® J
Outer Ø	
Width	

- Made from the high-performance plastic iglidur® J
- Low coefficient of friction
- Screw through the reinforced hole in the middle for a firm hold

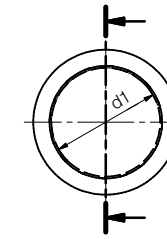
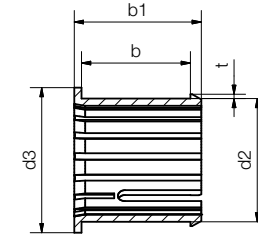
Min. -50°C
Max. +90°C

Dimensions [mm]

Outer Ø Da	Wear limit	Width s	K For countersunk screw	Max. static load capacity [N]	Part No.
40	1.5	6 ± 0.05	M6	28,500	RSDJ-40-06
60	2.5	8 ± 0.05	M8	66,000	RSDJ-60-08
80	2.5	8 ± 0.05	M8	120,000	RSDJ-80-08

drylin® R clip in | Product range

Clip-on liners



Order key

Type	Size
iglidur® J Liner Clip-on Metric	JUCM-1216-16
Inner Ø d1	
Outer Ø d2	
Length b	

- Quick installation by hand for sheet thicknesses of 12 to 30mm
- No locating spigot required

⁷⁸⁾ According to igus® testing method ► Page 1146
⁸²⁾ Design tips ► Page 1078
Please note: Installation instructions ► Page 1079
 Min. -50°C
Max. +90°C

Dimensions [mm]

d1	d2	d3	b +0.05 / +0.25	b1	t	Part No.
12	16	20	16	20.5	0.8	JUCM-1216-16
14	18	22	18	22.5	0.8	JUCM-1418-18
15	17	22	15	18.0	0.8	JUCM-1517-15 New
16	20	25	20	24.5	0.8	JUCM-1620-20
18	22	26	20	24.5	0.8	JUCM-1822-20
20	24	30	25	30.0	1.0	JUCM-2024-25
22	27	34	27	32.0	1.0	JUCM-2227-27
22	27	32	34	39.5	1.0	JUCM-2227-34
25	29	35	30	35.5	1.0	JUCM-2529-30
30	34	40	30	35.0	1.2	JUCM-3034-30

Technical data

Part No.	d1 tolerance ⁷⁸⁾ [mm]	Fmax. dynamic ⁸²⁾	Fmax. static ⁸²⁾	Weight [g]
		p = 5MPa [N]	p = 35MPa [N]	
JUCM-1216-16	+0.04 +0.10	320	1,600	2.5
JUCM-1418-18	+0.04 +0.10	440	2,200	2.9
JUCM-1517-15	+0.04 +0.10	380	1,900	1.4
JUCM-1620-20	+0.04 +0.10	560	2,800	3.9
JUCM-1822-20	+0.04 +0.10	630	3,150	4.2
JUCM-2024-25	+0.04 +0.12	880	4,400	5.8
JUCM-2227-27	+0.04 +0.12	1,000	5,000	9.4
JUCM-2227-34	+0.04 +0.12	1,300	6,500	10.3
JUCM-2529-30	+0.04 +0.12	1,300	6,500	8.6
JUCM-3034-30	+0.04 +0.12	1,500	7,500	10.0