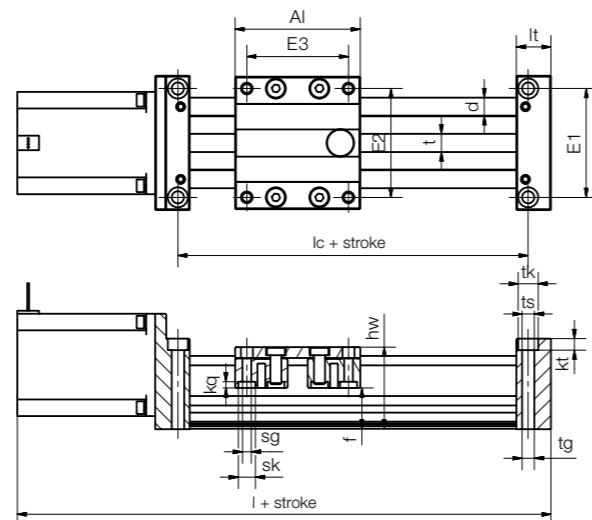
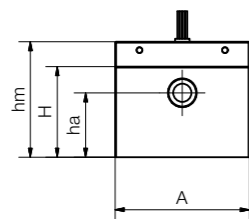


## Direct drive in short design



- Smaller installation space and more stroke
- Compact short design due to the use of drylin® lead screw motors
- Optimised ratio of useful length to total length (compared to the SAW series, up to 70mm)
- Improved operating characteristics
- Space-saving and lightweight



## Technical data

Part No.	Max. stroke length [mm]	Weight [kg]	Additional (per 100mm)	Max. speed [rpm]	Max. static load capacity	
					axial [N]	radial [N]
SAWC-0630	300	0.5	0.1	1,000	100	200
SAWC-1040	500	1.0	0.1	1,500	500	2,000

## Dimensions [mm]

Part No.	A	Al	H	E1	E2	E3	l	lc	hw	f	lt	lb
	-0.3	-0.3		+0.15	+0.15	+0.15						
SAWC-0630	54	50	42.5	40	45	51	139	75	30	13.5	15	7.5
SAWC-1040	74	69	50	60	60	56	183	82	45	22.5	19	9.5
Part No.	tk	ts	tg	kt	sk	sg	kq	d	T	ha		
				±0.1					∅			
SAWC-0630	8	4.2	M5	20	7	M4	2	5	Tr08x1.5 Ds08x15	21.5		
SAWC-1040	11	6.8	M8	6.4	9.5	M6	3.5	10	Tr10x2 <sup>92)</sup> Ds10x12	35.5		

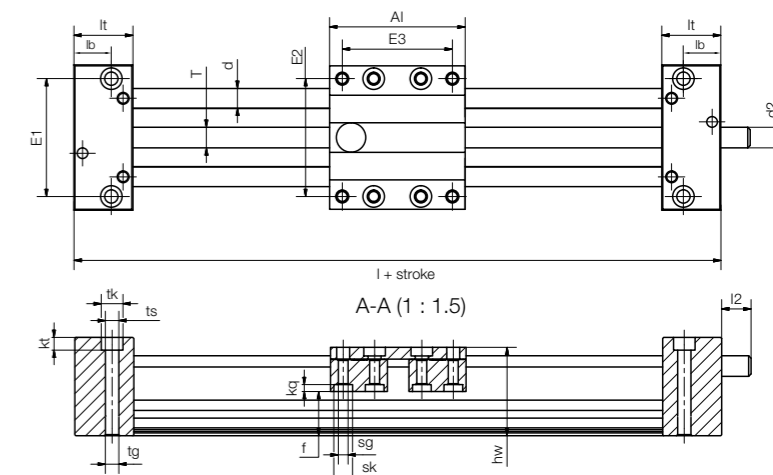
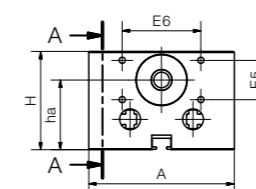
<sup>92)</sup> Lead screw end unmachined

## Linear modules with motor – deliverable within 24 hours from stock



igus® delivers ready-to-install, preconfigured linear modules (drive: lead screw or toothed belt) from stock within 24 hours. You simply choose between 3 sizes, 3 stroke lengths and 3 stepper motors ... and the system is delivered in 24 hours after you place your order.

- drylin® linear modules with motor
- Available from stock
- Ready-to-install and pre-assembled
- NEMA stepper motors with stranded wires
- Basis drylin® ZLW and SAW linear axes
- Available accessories ► Page 1503



## Technical data

Part No.	Installation size	Carriage length	Stroke length	Motor type
DLE-SA-0004	SAW-0630 Tr08x1.5	60	250	NEMA17 stranded wires
DLE-SA-0005	SAW-1040 Tr10x2	69	500	NEMA23 stranded wires
DLE-SA-0006	SAW-1080 Tr12x3	100	500	NEMA23XL stranded wires

Part No.	Max. stroke length [mm]	Weight [kg]	Additional (per 100mm)	Max. speed [rpm]	Max. static load capacity	
					axial [N]	radial [N]
DLE-SA-0004	300	0.5	0.1	1,000	100	400
DLE-SA-0005	500	1.0	0.1	1,500	500	2,000
DLE-SA-0006	750	1.9	0.2	1,500	750	2,000

## Dimensions [mm]

Part No.	A	Al	H	E1	E2	E3	E5	E6	l	lc	hw	f	lt	lb
	-0.3	-0.3		+0.15	+0.15	+0.15								
DLE-SA-0004	54	60/100	32	40	45	51/91	11	23	112/152	92	30	13.5	26	10
DLE-SA-0005	74	69/100/150	50	60	60	56/87/137	20	40	129/160/210	91	45	22.5	30	19
DLE-SA-0006	108	100	58	94	94	87	-	-	163	131.5	49	22.5	31.5	15.75
Part No.	tk	ts	tg	kt	sk	sg	kq	d	T	l2	d2	ha		
				±0.1					∅					
DLE-SA-0004	11	6.6	-	20	-	5	10	□5	Tr8x1.5	15	Tr8x1.5	21.5		
DLE-SA-0005	11	6.8	M8	6.4	9.5	M6	3.5	10	Tr10x2	17	Tr10x2 ∅ 6 h9 <sup>113)</sup>	35.5		
DLE-SA-0006	11	6.8	M8	18	9.5	M6	3.5	10	Tr12x3	17	Tr12x3 ∅ 8 h9 <sup>113)</sup>	37.5		

<sup>113)</sup> Lead screw end unmachined, also available with machined end



Further information about the motors

► Page 1518