



SWM SWUMN SWUM

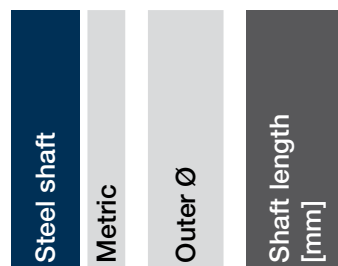
- Completely supported and mounted with standard aluminium support
- Available shaft materials:
  - ▶ Cf53 steel (AISI 1055), hardened/ground
  - ▶ Cf53 steel (AISI 1055), hard-chromed
- For supported shafts:
  - ▶ Partial shaft support supplied in lengths of 600mm max.
  - ▶ Standard pitch T2, T1 also possible upon request
  - ▶ Symmetrical hole pitches C5 = C6



Order key

Type Size Options

SW M- 06 - 2000



igus® recommendation: Linear plain bearings equipped with iglidur® E7 liners for 8 times longer service life

## Dimensions [mm] – steel shafts 1.1213

Part No.	Outer Ø	Weight [kg/m]	Max. length	Effective hardness depth (at 1.1213)
SWM-06	6	0.222	3,000	0.8
SWM-08	8	0.359	4,000	0.9
SWM-10	10	0.617	4,000	0.9
SWM-12	12	0.888	6,000	1.0
SWM-16	16	1.578	6,000	1.2
SWM-20	20	2.466	6,000	1.6
SWM-25	25	3.853	6,000	1.8
SWM-30	30	5.549	6,000	2.0
SWM-40	40	9.865	6,000	2.2
SWM-50	50	15.413	6,000	2.4

## Dimensions [mm] – hard-chromed steel shafts 1.1213

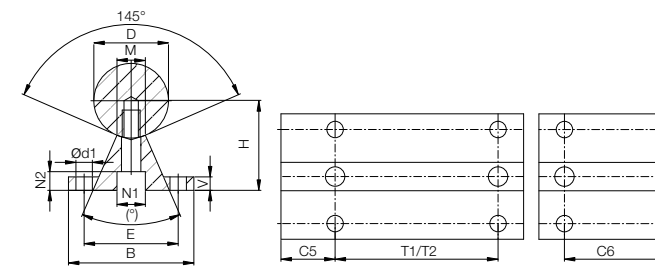
Part No.	Outer Ø	Weight [kg/m]	Max. length	Effective hardness depth (at 1.1213)
SWMH-06	6	0.222	3,000	0.8
SWMH-08	8	0.359	4,000	0.9
SWMH-10	10	0.617	4,000	0.9
SWMH-12	12	0.888	6,000	1.0
SWMH-16	16	1.578	6,000	1.2
SWMH-20	20	2.466	6,000	1.6
SWMH-25	25	3.853	6,000	1.8
SWMH-30	30	5.549	6,000	2.0
SWMH-40	40	9.865	6,000	2.2
SWMH-50	50	15.413	6,000	2.4



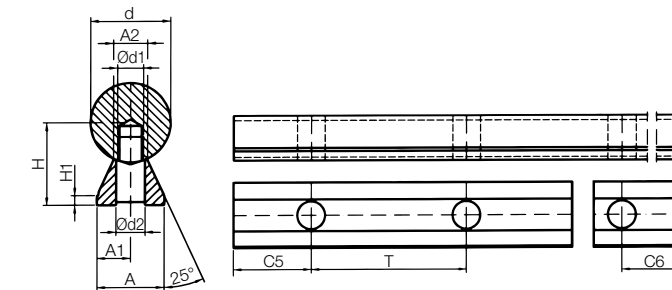
Order example:

SWM-16-500: steel shaft 16mm Ø 1.1213, 500mm in length

## SWUM



## SWUMN



Please contact us!

drylin® shafts can be individually machined. Please send us your drawing or configure online. We can then provide a quotation quickly.

▶ [www.igus-asean.com/shaft-configurator](http://www.igus-asean.com/shaft-configurator)

## Dimensions [mm] – supported steel shafts 1.1213

Part No.	D	B	H	V	N1	N2	d1	M (°)	E	T1	C5/C6		T2	C5/C6		Weight [kg/m]	
											Min.	Max.		Min.	Max.		
			±0.02							±0.15	for T1	Standard		for T2	Standard		
SWUM-12	12	40	22	5	8.0	5.0	4.5	5.8	50	29	75	20	57	120	20	79	1.75
SWUM-16	16	45	26	5	9.5	6.0	5.5	7.0	50	33	100	20	69	150	20	94	2.64
SWUM-20	20	52	32	6	11.0	6.5	6.6	8.3	50	37	100	20	69	150	20	94	3.97
SWUM-25	25	57	36	6	14.0	8.5	6.6	10.8	50	42	120	20	79	200	20	119	5.65
SWUM-30	30	69	42	7	17.0	10.5	9.0	11.0	50	51	150	20	94	200	20	119	7.93
SWUM-40	40	73	50	8	17.0	10.5	9.0	15.0	50	55	200	20	119	300	20	169	12.88
SWUM-50	50	84	60	9	19.0	12.5	11.0	19.0	46	63	200	20	119	300	20	169	19.60

## Dimensions [mm] – supported steel shafts 1.1213

Part No.	d	H	H1	A	A1	A2	d1	d2	T	C5/C6		Weight [kg/m]
										Min.	Max.	
			±0.02			±0.02						
SWUMN-12	12	14.5	3	11	5.5	5.4	M4	4.5	75	20	57	1.62
SWUMN-16	16	18	3	14	7.0	7.0	M5	5.5	75	20	57	2.54
SWUMN-20	20	22	3	17	8.5	8.1	M6	6.6	75	20	57	3.81
SWUMN-25	25	26	3	21	10.5	10.3	M8	9.0	75	20	57	5.62
SWUMN-30	30	30	3	23	11.5	11.0	M10	11.0	100	20	69.5	7.63
SWUMN-40	40	39	4	30	15.0	15.0	M12	13.5	100	20	69.5	13.47
SWUMN-50	50	46	5	35	17.5	19.0	M14	15.5	100	20	69.5	20.31

Low level supported shafts are delivered unmounted.



Order example:

SWUM-16-500: supported steel shaft 16mm Ø made from 1.1213, 500mm length