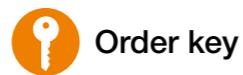


Self-locking



- Flat and compact
- High torsional stability
- Fully supported
- drylin® W guide rails, hard-anodised aluminium
- Available accessories
 - ▶ Page 1503
- Lead screw nuts are available separately ▶ Page 1330
- Available with motor



Order key



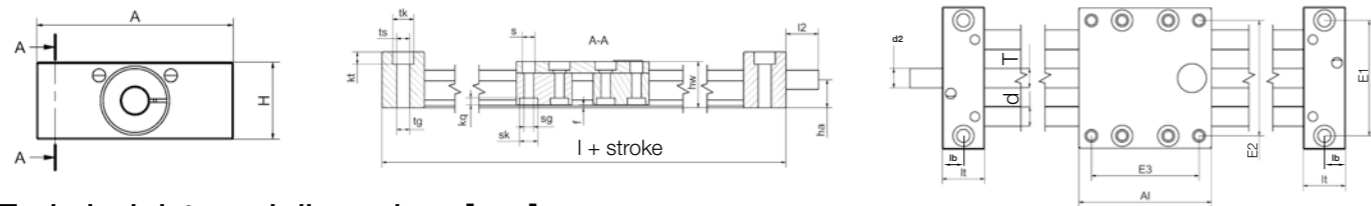
Order example

SLW-1040



Select versions and accessories online

▶ www.igus-asean.com/drylinSLW



Technical data and dimensions [mm]

Part No.	Design	Max. stroke length [mm]	Weight [kg]	Additional (per 100mm) [kg]	Max. static load capacity		Shaft end support material
					axial [N]	radial [N]	
SLW-0630	■	300	0.2	0.08	50	200	Plastic
SLW-1040	●	750	0.7	0.10	700	2,800	Zinc die-casting
SLW-1080	●	750	0.9	0.20	700	2,800	Aluminium
SLW-10120	●	750	1.6	0.25	700	2,800	Aluminium
SLW-1660	●	750	1.5	0.30	1,200	4,600	Aluminium
SLW-2080	●	1,000	3.0	0.40	1,600	6,400	Aluminium
SLW-25120	●	1,250	5.9	0.90	2,500	10,000	Aluminium

Part No.	A	AI ⁹⁴⁾	H	E1	E2	E3	I	hw	f	lt	lb	tk	ts	tg
	-0.3	-0.3		±0.15	±0.15	±0.15								
SLW-0630	54	60	20	40	45	51	100	18	1.2	20	8	11	6.6	-
SLW-1040	74	69	29	60	60	56	113	24	1.5	22	11	11	6.8	M8
SLW-1080	108	100	29	94	94	87	144	24	1.5	22	11	11	6.8	M8
SLW-10120	154	100	29	140	140	87	144	24	1.5	22	11	11	6.8	M8
SLW-1660	104	100	37	84	86	82	150	35	1.5	25	12.5	15	9.0	M10
SLW-2080	134	150	46	116	116	132	206	44	1.5	28	14	15	8.6	M10
SLW-25120	200	150	60	173	173	128	220	55	2.5	35	17.5	20	13.5	M16

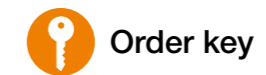
Part No.	kt	s	sk	sg	kq	d	T	I2	d2	ha
	±0.1								Standard	
SLW-0630	8.0	4.5	7.0	M4	2.0	6	M8	15	M8	9.5
SLW-1040	6.4	6.6	9.5	M6	4.4	10	Tr10x2	17	Tr10x2 ⁹²⁾	14.5
SLW-1080	6.4	6.6	9.5	M6	4.4	10	Tr10x2	17	Tr10x2 ⁹²⁾	14.5
SLW-10120	M8	6.4	9.5	M6	4.4	10	Tr10x2	17	Tr10x2 ⁹²⁾	14.50
SLW-1660	8.6	9.0	11	M8	5.5	16	Tr14x4	20	Tr14x4 ⁹²⁾	18.5
SLW-2080	8.6	9.0	14	M8	5.5	20	Tr18x4	26	12h9	23.0
SLW-25120	12.6	11.0	15	M10	5.0	25	Tr24x5	38	14h9	30.0

⁹²⁾ Lead screw end unmachined; ⁹⁴⁾ Carriages also in 100, 150, 200 and 250mm lengths available upon request

Axial pre-load, radial adjustment



- Radial and axial pre-load
- Manual adjustable clearance
- High torsional stability
- Fully supported
- drylin® W guide rails, hard-anodised aluminium
- Available accessories
 - ▶ Page 1503
- Lead screw nuts are available separately ▶ Page 1330
- Available with motor

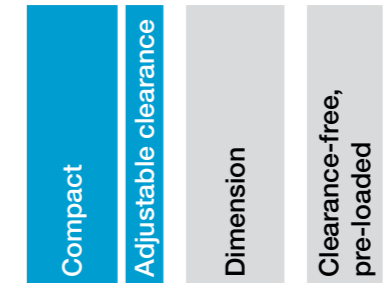


Order key



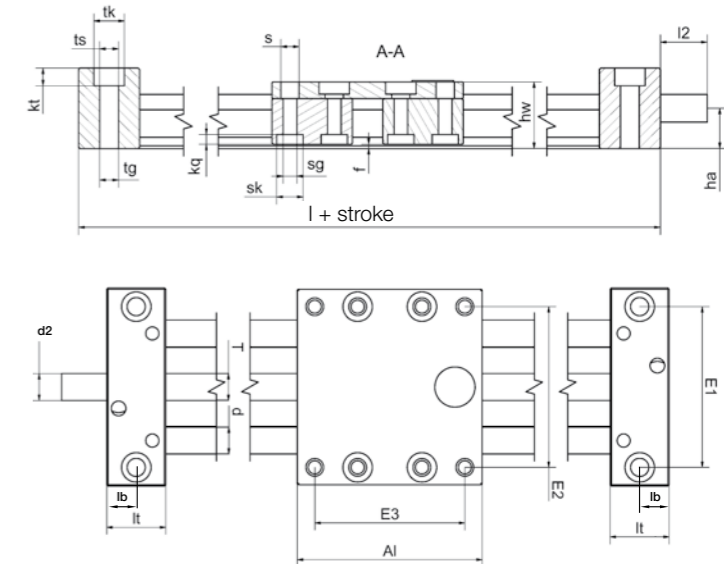
Order example

SLW E - 1040 - PL



Select versions and accessories online

▶ www.igus-asean.com/drylinSLW



Technical data ▶ See SLW on left side

Dimensions [mm]

Part No.	A	AI ⁹⁴⁾	H	E1	E2	E3	I	hw	f	lt	lb	tk	ts
	-0.3	-0.3		±0.15	±0.15	±0.15							
SLWE-1040-PL	74	69	29	60	60	56	113	24	1.5	22	11	11	6.8
SLWE-1080-PL	108	100	29	94	94	87	144	24	1.5	22	11	11	6.8
SLWE-1660-PL	104	100	37	84	86	82	150	35	1.5	25	12.5	15	9.0
SLWE-2080-PL	134	150	46	116	116	132	206	44	1.5	28	14	15	8.6

Part No.	tg	kt	s	sk	sg	kq	d	T	I2	d2	ha
		±0.1								Standard	
SLWE-1040-PL	M8	6.4	6.6	9.5	M6	4.4	10	Tr10x2	17	Tr10x2 ⁹²⁾	14.5
SLWE-1080-PL	M8	6.4	6.6	9.5	M6	4.4	10	Tr10x2	17	Tr10x2 ⁹²⁾	14.5
SLWE-1660-PL	M10	8.6	9.0	11.0	M8	5.5	16	Tr14x4	20	Tr14x4 ⁹²⁾	18.5
SLWE-2080-PL	M10	8.6	9.0	14.0	M8	5.5	20	Tr18x4	26	12h9	23.0

⁹²⁾ Lead screw end unmachined; ⁹⁴⁾ Carriages also in 100, 150, 200 and 250mm lengths available upon request