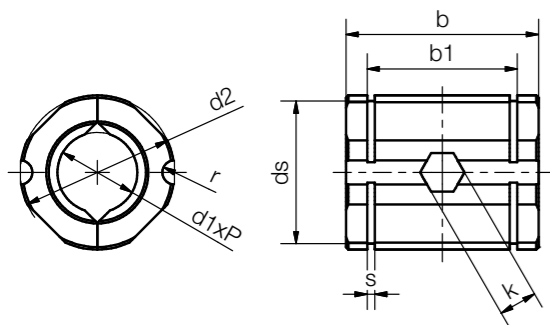




Order key

Part number	Dimension	Thread
<b>J T R M- 22 30 -TR 10X2</b>		
igidur® material	Split nut	Hand of rotation
		Metric
	d2	b1
		Trapezoidal thread
		Diameter [mm]
		Pitch

This part includes 2 nut halves and 1 piece nut each based on DIN 934 made from 304 stainless steel to prevent twisting



Technical data

Part No.	Max. axial load		Mounting with nut
	static <sup>50)</sup> [N]	static <sup>51)</sup> [N]	
JTRM-2230TR10X2	300	500	DIN 934 M4
JTRM-3240TR20X4	1,000	1,500	M5
JTRM-3240TR20X8P4	1,000	1,500	M5

Dimensions [mm]

Thread	b	b1 <sup>156)</sup>	d2	ds	k	r	s	Part No.
Tr10x2	30	22.6	22	20.5	7	1.5	1.3	JTRM-2230TR10X2
Tr20x4	40	31.2	32	29.6	8	2.5	1.6	JTRM-3240TR20X4
Tr20x8P4	40	31.2	32	29.6	8	2.5	1.6	JTRM-3240TR20X8P4

<sup>50)</sup> Mounting in the housing via radially inserted nut DIN 934

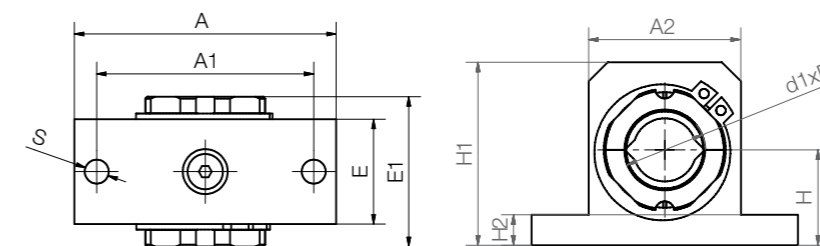
<sup>51)</sup> Mounting in the housing via circlips DIN 471

<sup>156)</sup> Tolerances according to DIN ISO 2768-1, tolerance class m (medium)



Order key

Part number	Thread
<b>RG A S - J T R M-TR 10X2</b>	
Linear housing	Aluminium
	Small
	igidur® material
	Split nut
	Hand of rotation
	Metric
	Trapezoidal thread
	Diameter [mm]
	Pitch



Technical data

Part No.	Nut	Locking ring
RGAS-JTRM-TR10X2	DIN 439 M4	DIN 471-A22
RGAS-JTRM-TR20X4	DIN 439 M5	DIN 471-A32
RGAS-JTRM-TR20X8P4	DIN 439 M5	DIN 471-A32

Dimensions [mm]

Thread	H	H1	H2	A	A1	A2	E	E1	S	Part No.
Tr10x2	18	35	6	52	42	30	20	32	5.3	RGAS-JTRM-TR10X2
Tr20x4	25	48	8	70	58	40	28	40	6.4	RGAS-JTRM-TR20X4
Tr20x8P4	25	48	8	70	58	40	28	40	6.4	RGAS-JTRM-TR20X8P4