



CWM

- Material: CFK composite
- Roundness tolerance:  $\pm 0.05\text{mm}$
- Diameter tolerance:  $-0.1\text{mm}$
- Application temperature: max.  $+80^{\circ}\text{C}$
- Colour: Black

## Order key

Type	Size	Options
------	------	---------

CWM- 12 -1000

Carbon fibre shaft	Metric	Outer Ø	Shaft length [mm]
--------------------	--------	---------	-------------------

## Dimensions [mm]

Part No.	Design	Outer Ø -0.1	Inner Ø -0.1	Max. length	Weight [g]
CWM-12	Hollow shaft	12	9.0	2,000	70
CWM-16	Hollow shaft	16	12.5	2,000	120
CWM-20	Hollow shaft	20	16.0	2,000	170
CWM-30	Hollow shaft	30	26.0	2,000	270

## Order example:

CWM-16-500: Carbon fibre shaft, 16mm outer Ø, 500mm length

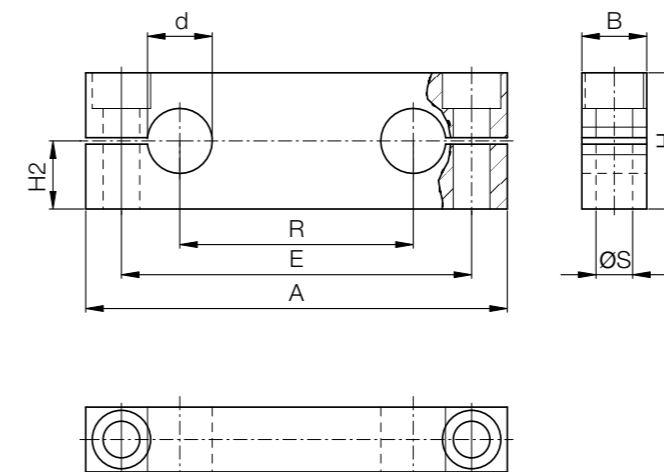
## Order key

Type	Size
------	------

TA -08

Shaft end support, floating	Inner Ø
-----------------------------	---------

- Material: aluminium
- Threaded fixing hole



## Dimensions [mm]

Part No.	d	A	B	H	H2 $\pm 0.015$	Ø S	E	R	Weight [g]
TA-08	8	65	12	22	11	M5	52	32	40
TA-10	10	70	12	21	10.5	M5	55	34	37
TA-12	12	85	14	28	14	M6	70	42	70
TA-16	16	100	18	32	16	M8	82	54	130
TA-20	20	130	20	42	21	M10	108	72	220
TA-25	25	160	25	52	26	M12	132	88	440
TA-30	30	180	25	58	29	M12	150	96	560
TA-40	40	230	30	72	36	M16	190	122	1,000

## Order example:

TA-10: floating shaft end support with inner Ø 10mm