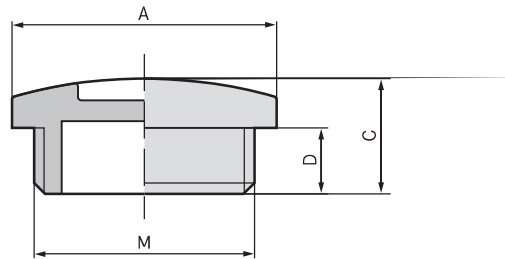




SKINDICHT® BLK-M / SKINDICHT® BLK-GL-M



Benefits

SKINDICHT® BLK-M

- For closing pre-threaded holes
- Cost-effective solution

SKINDICHT® BLK-GL-M

- For closing pre-threaded holes
- High stability due to glass fibre reinforcement

Application range

- Control cabinet manufacturing
- Distribution box
- Junction boxes

Product features

- Assembling with screwdriver

Product Make-up

- Metric connection thread acc. to DIN EN 60423
- Basis for technical information DIN IEC 62444

Technical data

Classification ETIM 5/6
ETIM 5.0/6.0 Class-ID: EC000032
ETIM 5.0/6.0 Class-Description: Plug for cable screw gland

SKINDICHT® BLK-GL-M
UL pending

Colour delivered
SKINDICHT® BLK-M
Light grey (RAL 7035)
SKINDICHT® BLK-GL-M
Silver grey (RAL 7001)
Light grey (RAL 7035)
Black (RAL 9005)

Material
SKINDICHT® BLK-M
Impact-resistant polystyrene
SKINDICHT® BLK-GL-M
Polyamide, glass fibre-reinforced
O-Ring: NBR

Protection rating
IP 54
IP 68 (with O-ring)

Temperature range
SKINDICHT® BLK-M
-25°C to +60°C
SKINDICHT® BLK-GL-M
With O-ring: -20°C to +100°C
Without O-ring: -40°C to +100°C

Article number	Article designation / size	Overall length C mm	Thread length D mm	Outer Ø (mm)	Pieces / PU
SKINDICHT® BLK-M					
52006600	M 12 x 1,5	8.0	6	15.0	100
52006610	M 16 x 1,5	9.0	6	20.0	100
52006620	M 20 x 1,5	9.5	6	24.0	100
52006630	M 25 x 1,5	11.5	8	30.0	100
52006640	M 32 x 1,5	12.0	8	37.0	50
52006650	M 40 x 1,5	13.0	8	46.0	25
52006660	M 50 x 1,5	15.0	10	56.0	25
52006670	M 63 x 1,5	17.0	12	70.0	25
SKINDICHT® BLK-GL-M silver-grey					
52006101	M 12 x 1,5	8.0	6	15.0	100
52006111	M 16 x 1,5	9.0	6	20.0	100
52006121	M 20 x 1,5	9.5	6	24.0	100
52006131	M 25 x 1,5	11.5	8	30.0	100
52006141	M 32 x 1,5	12.0	8	37.0	50
52006151	M 40 x 1,5	13.0	8	46.0	25
52006161	M 50 x 1,5	15.0	10	56.0	25
52006171	M 63 x 1,5	17.0	12	70.0	25
SKINDICHT® BLK-GL-M light grey					
52006100	M 12 x 1,5	8.0	6	15.0	100
52006110	M 16 x 1,5	9.0	6	20.0	100
52006120	M 20 x 1,5	9.5	6	24.0	100
52006130	M 25 x 1,5	11.5	8	30.0	100
52006140	M 32 x 1,5	12.0	8	37.0	50
52006150	M 40 x 1,5	13.0	8	46.0	25
52006160	M 50 x 1,5	15.0	10	56.0	25
52006170	M 63 x 1,5	17.0	12	70.0	25