



**SKINDICHT® KU-M**



**Benefits**

- Enables the use of cable glands with smaller connection threads than the existing threaded holes

**Application range**

- Machines
- Devices
- Housings

**Product Make-up**

- Metric connection thread acc. to DIN EN 60423
- Basis for technical information DIN IEC 62444

**Technical data**

- Classification ETIM 5/6**  
ETIM 5.0/6.0 Class-ID: EC000441  
ETIM 5.0/6.0 Class-Description: Cable screw gland
- Colour delivered**  
Light grey (RAL 7035)  
Black (RAL 9005), UV-resistant
- Material**  
Polyamide, glass fibre-reinforced
- Temperature range**  
-40 °C to +100 °C

Article number	Thread, male M1	Thread, female M2	SW wrench size mm	Thread length D mm	Pieces / PU
<b>SKINDICHT® KU-M light grey</b>					
52104505	16 x 1.5	12 x 1.5	22	9	100
52104470	20 x 1.5	12 x 1.5	24	9	100
52104504	20 x 1.5	16 x 1.5	24	9	100
52104472	25 x 1.5	12 x 1.5	29	10	100
52104473	25 x 1.5	16 x 1.5	29	10	100
52104474	25 x 1.5	20 x 1.5	29	10	100
52104475	32 x 1.5	12 x 1.5	36	12	50
52104476	32 x 1.5	16 x 1.5	36	12	50
52104477	32 x 1.5	20 x 1.5	36	12	50
52104478	32 x 1.5	25 x 1.5	36	12	50
52104479	40 x 1.5	16 x 1.5	46	12	50
52104480	40 x 1.5	20 x 1.5	46	12	50
52104481	40 x 1.5	25 x 1.5	46	12	25
52104482	40 x 1.5	32 x 1.5	46	12	25
52104483	50 x 1.5	20 x 1.5	55	14	5
52104484	50 x 1.5	25 x 1.5	55	14	5
52104485	50 x 1.5	32 x 1.5	55	14	5
52104486	50 x 1.5	40 x 1.5	55	14	5
52104487	63 x 1.5	25 x 1.5	68	15	5
52104488	63 x 1.5	32 x 1.5	68	15	5
52104489	63 x 1.5	40 x 1.5	68	15	5
52104469	63 x 1.5	50 x 1.5	68	15	5

Photographs and graphics are not to scale and do not represent detailed images of the respective products.

**Accessories**

- SKINTOP® GMP-GL-M refer to page 711

**Benefits**

- Enables the use of cable glands with smaller connection threads than the existing threaded holes

**Application range**

- Machines
- Devices
- Housings

**Product Make-up**

- Metric connection thread acc. to DIN EN 60423
- Basis for technical information DIN IEC 62444

**Technical data**

- Classification ETIM 5/6**  
ETIM 5.0/6.0 Class-ID: EC000441  
ETIM 5.0/6.0 Class-Description: Cable screw gland
- On request**  
Also available with pre-installed O-ring
- Material**  
Nickel-plated brass
- Temperature range**  
-60 °C to +200 °C



**SKINDICHT® MR-M**



Article number	Thread, male M1	Thread, female M2	Pieces / PU
<b>SKINDICHT® MR-M</b>			
52104310	16 x 1.5	12 x 1.5	100
52104311	20 x 1.5	12 x 1.5	100
52104312	20 x 1.5	16 x 1.5	100
52104313	25 x 1.5	16 x 1.5	50
52104314	25 x 1.5	20 x 1.5	50
52104315	32 x 1.5	20 x 1.5	50
52104316	32 x 1.5	25 x 1.5	50
52104317	40 x 1.5	25 x 1.5	25
52104318	40 x 1.5	32 x 1.5	25
52104319	50 x 1.5	32 x 1.5	25
52104320	50 x 1.5	40 x 1.5	10
52104321	63 x 1.5	40 x 1.5	10
52104322	63 x 1.5	50 x 1.5	10
52006575	72 x 2	63 x 1.5	1
<b>SKINDICHT® MR-M, blank brass</b>			
52006579	80 x 2	75 x 1.5	1

Photographs and graphics are not to scale and do not represent detailed images of the respective products.

### Accessories

- SKINDICHT® SM-M refer to page 742
- SKINDICHT® O-Ring FKM metric refer to page 757
- SKINDICHT® O-Ring NBR metric refer to page 757
- SKINDICHT® JT PTFE metric refer to page 758



## SKINDICHT® MR-M hex.



### Benefits

- Enables the use of cable glands with smaller connection threads than the existing threaded holes
- With guide notch for O-ring
- Assembling with a wrench

### Application range

- Machines
- Devices
- Housings

### Product Make-up

- Metric connection thread acc. to DIN EN 60423
- Basis for technical information DIN IEC 62444

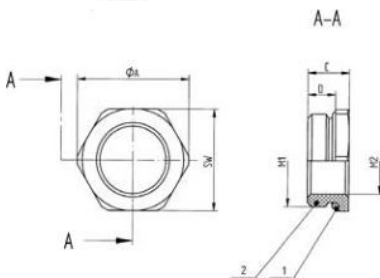
### Technical data

**Classification ETIM 5/6**  
 ETIM 5.0/6.0 Class-ID: EC000441  
 ETIM 5.0/6.0 Class-Description: Cable screw gland

**On request**  
 FKM O-ring  
 -20 °C to +200 °C

**Material**  
 Body: nickel-plated brass  
 O-ring: NBR

**Temperature range**  
 -20°C to +100°C



Article number	Thread, male M1	Thread, female M2	SW wrench size mm	Ø A (mm)	Overall length C mm	Thread length D mm	Pieces / PU
<b>SKINDICHT® MR-M hex.</b>							
52101965	16 x 1.5	12 x 1.5	18	20.2	8.5	5.5	50
52101966	20 x 1.5	16 x 1.5	22	24.4	9.0	6	50
52101967	25 x 1.5	16 x 1.5	28	31.2	10.0	6.5	50
52101968	25 x 1.5	20 x 1.5	28	31.2	10.0	6.5	50
52101969	32 x 1.5	16 x 1.5	36	40.0	11.5	8	25
52101972	32 x 1.5	20 x 1.5	36	40.0	11.5	8	25
52101973	32 x 1.5	25 x 1.5	36	40.0	11.5	8	25
52101974	40 x 1.5	25 x 1.5	43	47.5	12.5	8.5	10
52101975	40 x 1.5	32 x 1.5	43	47.5	12.5	8.5	10
52101976	50 x 1.5	40 x 1.5	54	58.0	14.0	10	5
52101977	63 x 1.5	50 x 1.5	67	74.0	14.0	9.5	5
52101979	75 x 1.5	63 x 1.5	80	90.0	17.0	11	1
<b>SKINDICHT® MR-M, blank brass, with hexagon</b>							
52006563	80 x 2	63 x 1.5	85	93.5	23.0	15	1

Photographs and graphics are not to scale and do not represent detailed images of the respective products.

### Accessories

- SKINDICHT® SM-M refer to page 742