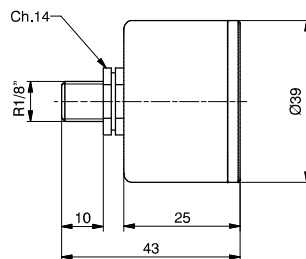
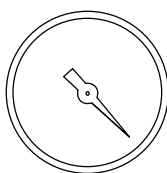


Series 1900

Vacuum Gauge



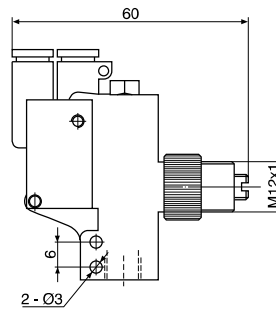
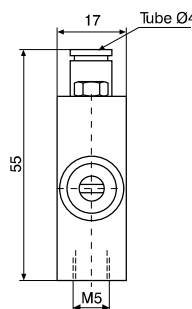
Ordering code

17070A.V

Technical features

Fluid	Unlubricated filtered air
Scale (-kPa)	0 ... 100
Temperature (°C)	-10 ... 80
Weight (gr.)	56

► Pneumatic vacuum switch

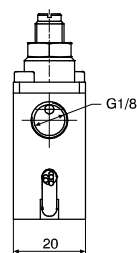
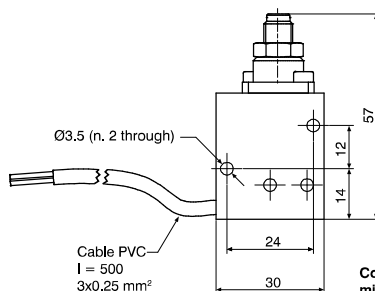


Vacuum switch whose function is, depending on the model, to turn a pneumatic signal on or off when a certain vacuum level is reached. The pressure differential that exists between the maximum value set and the restoration value cannot be adjusted. Especially recommended for the control of vacuum generators with a view to save energy.

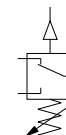
Code	19TR4.C	19TR4.A
Type of contact	N.C. (Normally closed)	N.O. (Normally open)
Pressure (bar)	1.5 ~ 8	
Actuation threshold can be set (-kPa)	15 ~ 95	10 ~ 95
Hysteresis (kPa)	12	3
Temperature (°C)	-10 ~ +60°C	
Weight (gr.)	44	
Connections for vacuum	M5	

Function	Settable
N.C. (Normally closed)	
N.O. (Normally open)	

Electromechanical vacuum switch



Correspondence colours and mounted microswitch on support
 Black = Common
 Blue = N.C.
 Grey = N.O.



Ordering code

19VCE.0.C1

ACCESSORIES

Vacuum switch whose function is to turn an electrical signal on or off when a certain vacuum level is reached. The pressure differential that exists between the maximum value set and the restoration value cannot be adjusted. Recommended for all cases where it is necessary to obtain an electrical signal once a certain level of vacuum is reached to start a work cycle, for control of the already attained grip by the suction cups or for reasons of safety, etc.

Technical features

Fluid	Vacuum
Flow rate	2A - 250 VAC
Regulation (-kPa)	20 ... 90
Temperature (°C)	-5 ... 70