

Series N776 - For compressed air and vacuum - G1 1/2"


General

The N776 G1.1/2" series of valves and solenoid operated poppet valves is the result of the technical evolution of the 776 series. A rolling diaphragm construction has replaced the previously used piston design ensure lower frictions and longer life.

Connection 3 is isolated via a dedicated seal which allow to have the N.O. version as well as the self feed for vacuum which was not available on the 776 series.

The pilot valves are the M3R (CNOMO Stile) with bistable manual override.

Coils are not included and have to be ordered separately (see 300 series, 22mm MB coils and 30mm CNOMO MC coils).

Coils c  **US homologated are also available. (See series 300).**

Construction characteristics

Springs	Stainless steel
Pistons	Aluminium (for Air) - Acetylic resin (for Vacuum)
Pin guide	Stainless steel
Diaphragm	NBR oil resistant rubber
Body, operator and end cover	Die-cast aluminium
Seals and poppets	NBR

Use and maintenance

These valves have a mean life of 10 to 15 million cycles under normal operating conditions.

Lubrication is not required for good operation but we recommend good filtration to avoid dirty deposit causing malfunction.

Please ensure that the valve is being used according with the manufacturers specification, such as air pressure and temperature.

The exhaust port of the distributor has to be protected in a dusty and dirty environment.

For these products, according to the construction technique and special application, is not required any maintenance with parts replacement.

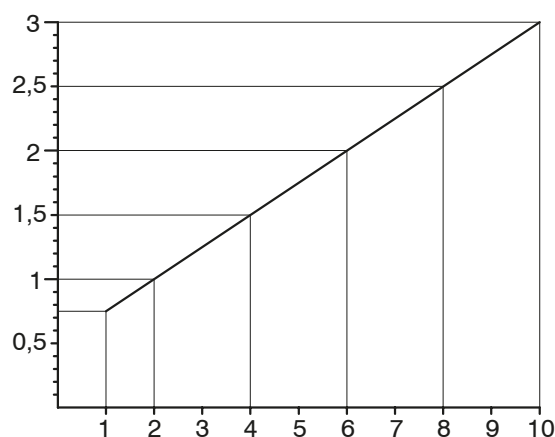
When necessary it is sufficient to clean the internal parts.

When it is used the solenoid valves with internal pilot, either for air or vacuum, inlet flow rate must be equal or higher that the required consumption flow rate.

Otherwise is better choose the external pilot version.

Minumum working pressure diagram

for external pilot versions N.C. & N.O.





Valves and solenoid valves poppet system Series N776 - For compressed air - G1 1/2"

Pneumatic - Spring

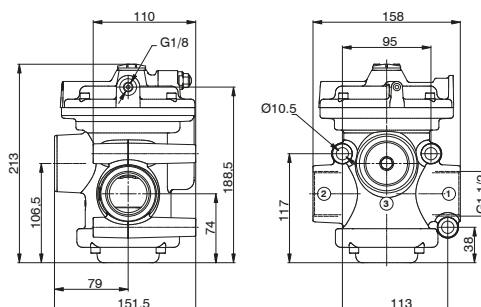
Coding: N776.22.11.1C

Operational characteristics

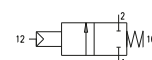
Fluid	Filtered air. No lubrication needed, if applied it shall be continuous
Max working pressure (bar)	10
Minimum piloting pressure (bar)	See diagram at general page
Temperature °C	-5 ÷ +70
Flow rate at 6 bar with $\Delta p=1$ (NI/min)	33500
Orifice size (mm)	38
Working ports size	G 1 1/2"
Pilot ports size	G1/8"



Weight 3560 g
Normally Closed



For compressed air - N.C.
Inlet port 1
Outlet port 2



Solenoid - Spring

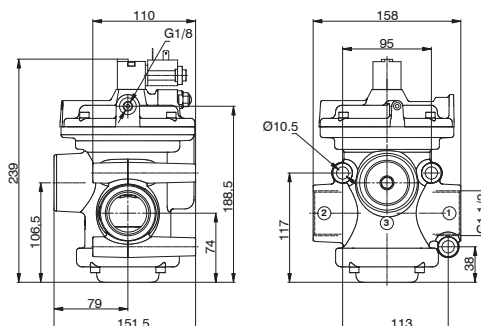
Coding: N776.22.0.F.M3R

Operational characteristics

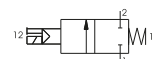
Fluid	Filtered air. No lubrication needed, if applied it shall be continuous
Max working pressure (bar)	10
Minimum piloting pressure (bar)	See diagram at general page (External pilot version) 3,5 (Internal pilot version)
Temperature °C	-5 ÷ +50
Flow rate at 6 bar with $\Delta p=1$ (NI/min)	33500
Orifice size (mm)	38
Working ports size	G 1 1/2"
Pilot ports size	G1/8"



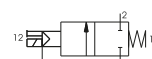
Weight 3620 g



Internal pilot - N.C.
Inlet port 1
Outlet port 2



External pilot - N.C.
Inlet port 1
Outlet port 2



Pneumatic - Spring

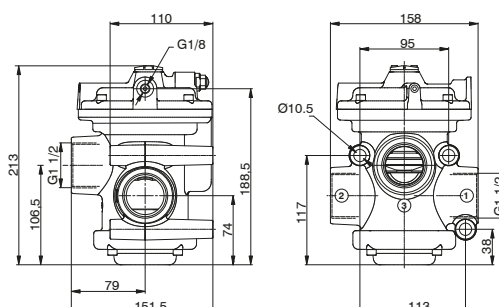
Coding: N776.32.11.1

Operational characteristics

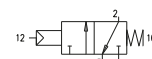
Fluid	Filtered air. No lubrication needed, if applied it shall be continuous
Max working pressure (bar)	10
Minimum piloting pressure (bar)	See diagram at general page
Temperature °C	-5 ÷ +70
Flow rate at 6 bar with $\Delta p=1$ (NI/min)	33500
Orifice size (mm)	38
Working ports size	G 1 1/2"
Pilot ports size	G1/8"



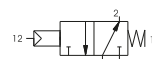
Weight 3550 g
Normally closed/Normally open



For compressed air - N.C.
Inlet port 1
Outlet port 2
Exhaust port 3



For compressed air - N.O.
Inlet port 3
Outlet port 2
Outlet port 1



Solenoid - Spring

Coding: N776.32.0.Ⓕ.Ⓜ3R

Operational characteristics

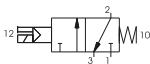
Fluid	Filtered air. No lubrication needed, if applied it shall be continuous
Max working pressure (bar)	10
Minimum piloting pressure (bar)	See diagram at general page (External pilot version) 3,5 (Internal pilot version)
Temperature °C	-5 ÷ +50
Flow rate at 6 bar with Δp=1 (Nl/min)	33500
Orifice size (mm)	38
Working ports size	G 1 1/2"
Pilot ports size	G1/8"

FUNCTION

1AC	= Internal pilot normally closed
Ⓕ 1AA	= Internal pilot normally open
1	= External pilot Normally closed- Normally open

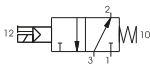
Internal pilot - N.C.

Inlet port 1
Outlet port 2
Exhaust port 3



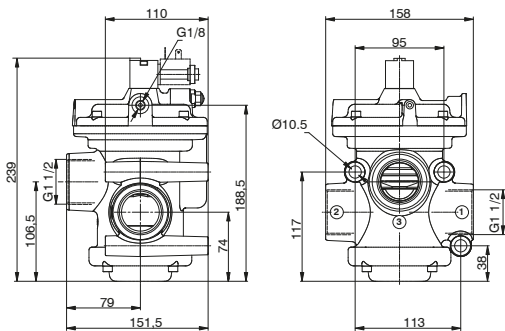
Internal pilot - N.O.

Inlet port 3
Outlet port 2
Outlet port 1



External pilot for compressed air - N.C.

- N.O.
Inlet port 1 (N.C.) or 3 (N.O.)
Outlet 2 (N.C. & N.O.)
Exhaust 3 (N.C.) or 1 (N.O.)



Weight 3610 g



Valves and solenoid valves poppet system Series N776 - For vacuum - G1 1/2"

1
AIR DISTRIBUTION

Pneumatic - Spring

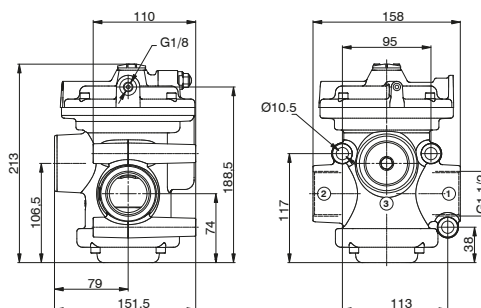
Coding: N776/V.22.11.1C

Operational characteristics

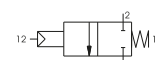
Fluid	Vacuum
Minimum piloting pressure (bar)	2
Temperature °C	-5 ÷ +70
Orifice size (mm)	38
Working ports size	G 1 1/2"
Pilot ports size	G1/8"



Weight 3178 g
Normally Closed



For vacuum - N.C.
Outlet port 2
Pump 1



Solenoid - Spring

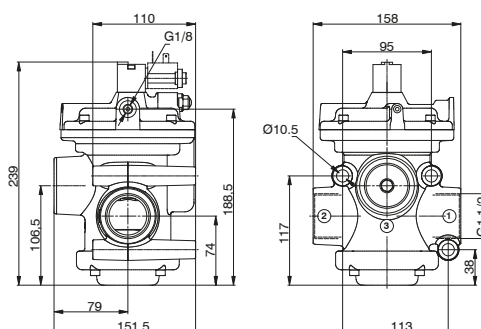
Coding: N776/V.22.0.F.M3R

Operational characteristics

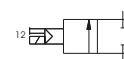
Fluid	Vacuum
Minimum piloting pressure (bar)	2 (External pilot version)
Temperature °C	-5 ÷ +50
Orifice size (mm)	38
Working ports size	G 1 1/2"
Pilot ports size	G1/8"



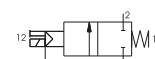
Weight 3238 g



Internal pilot for vacuum - N.C.
Outlet port 2
Pump 1



External pilot for vacuum - N.C.
Outlet port 2
Pump 1



Pneumatic - Spring

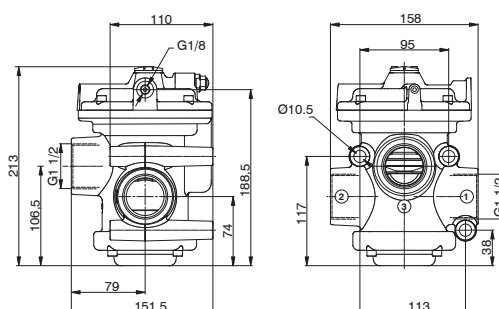
Coding: N776/V.32.11.1

Operational characteristics

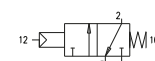
Fluid	Vacuum
Minimum piloting pressure (bar)	2
Temperature °C	-5 ÷ +70
Orifice size (mm)	38
Working ports size	G 1 1/2"
Pilot ports size	G1/8"



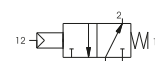
Weight 3168 g
Normally closed/Normally open



For vacuum - N.O.
Outlet port 1
Outlet port 2
Pump 3



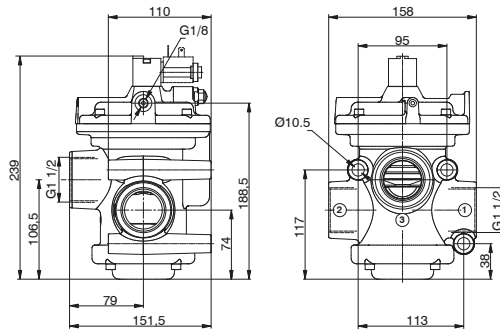
For vacuum - N.C.
Exhaust port 3
Outlet port 2
Pump 1



Coding: N776/V.32.0.F.M3R

Operational characteristics	
Fluid	Vacuum
Minimum piloting pressure (bar)	2 (External pilot version)
Temperature °C	-5 ÷ +50
Orifice size (mm)	38
Working ports size	G 1 1/2"
Pilot ports size	G1/8"

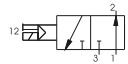
FUNCTION	
F	1AC = Internal pilot normally closed
	1AA = Internal pilot normally open
	1 = External pilot Normally closed- Normally open



Weight 3228 g

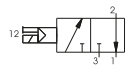
Internal pilot for vacuum - N.C.

Exhaust port 3
Outlet port 2
Pump 1



Internal pilot for vacuum - N.O.

Outlet port 1
Outlet port 2
Pump 3



External pilot for vacuum - N.C. - N.O.

Exhaust 3 (N.C.) or (N.O.)
Outlet 2 (N.C. & N.O.)
Pump 1 (N.C.) & 3 (N.O.)

