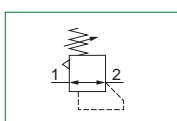




Panel mounting pressure regulator



- ▶ Diaphragm pressure regulator with relieving
- ▶ Balanced poppet
- ▶ Technopolymer body, metal connections
- ▶ Pressure adjusting lockable handle by simply pressing it downwards in the desired position
- ▶ Ring nut for panel mounting
- ▶ Atex certification (II 3GD) on request



Technical characteristics	Size
	Size 1
Body and connections type	Technopolymer body, integrated metal connections
IN / OUT connections	G1/8" - G1/4"
Assembly configuration	Stand alone Panel mounting With fixing bracket
Assembly position	indifferent
Pressure range (bar)	0 - 2 / 0 - 4 / 0 - 8 / 0 - 12
Regulation	Manual push and lock with pressure Manual lockable with accessories
Pressure measurement	G1/8" Pressure gauge connection port
Max. fittings torque IN / OUT connections	G1/8" metal: 15 G1/4" metal: 20

Operational characteristics	Size
	Size 1
Maximum working pressure (bar)	13
Minimum working pressure (bar)	0,5
Working temperature (°C)	-5 ÷ +50

Weights	Size
	Size 1
Technopolymer body version (g)	110

Order codes

17 109A . D . L . K

Size, body and connections

109A : Technopolymer body, connections G1/8"

109B : Technopolymer body, connections G1/4"

Pressure range

A : 0 - 2 bar

B : 0 - 4 bar

C : 0 - 8 bar

D : 0 - 12 bar

Type

L : Without relieving

SM : Improved relieving

SR : Quick exhaust (Unbalanced poppet)

SRM : Quick exhaust with improved relieving

SMF : Improved relieving with controlled relief

Options

Standard

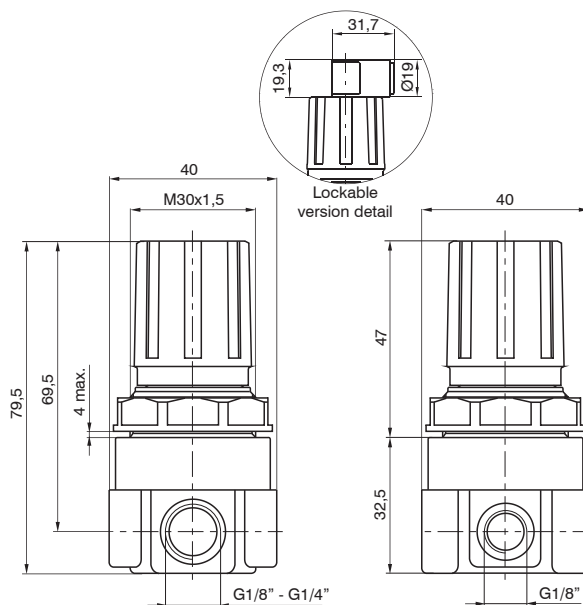
K : Lockable version

U : Lockable version with universal key

Example: 17109A.D.L.K

Size 1 Panel mounting pressure regulator, technopolymer body, G1/8" connections, 0 - 12 bar, without relieving, Lockable version

Dimensions



Size 1

Characteristic curves

