



Series 2200 "OPTYMA-Sc"

General

Optyma solenoid valves series it's completed by "Compact" version. It is useful in case a limited number of solenoid valves is needed without managing input and output signals. Standard base blocks provide 4 or 6 solenoid valves positions. Standard base blocks can be individually sold even without solenoid valves to allow maximum configuration flexibility.

Solenoid valves can be chosen from whole Optyma-S range.

Manifolds made in this way allow great room and weight saving against correspondent pneumatic group from Optyma-S series.

- Flow rate: up to 550[Nl/min], using the modular base with Ø8 quick fitting tube.
- Modular base available with Ø4, Ø6, Ø8 quick fitting tube.
- The solenoid pilots are low consumption and fitted on the same side of the valve.
- Mono and bistable valves have the same dimension.
- Easy and fast assembly on the sub base thanks to the "one screw" mounting solution.
- Possibility to replace a valve without the need of disconnecting the pneumatic pipes.
- Electrical and pneumatic connections positioned on the same side.
- Possibility to operate with different pressures and vacuum.
- 4 or 6 electric signals management (two signals per position, independently of the mounted solenoid valve).
- The electrical connection is achieved thanks to a 9 or 15 poles connector.
- The protection grade is IP65 directly integrated in the manifold components.

"Shifting time of pneumatic directional control valves or moving parts, logic devices were measured in accordance to ISO 12238:2001, Pneumatic fluid power-Directional control valves-Measurement of shifting time"

Main characteristics

One size: 12.5mm thick
Monostable and bistable valves with same dimensions
Modular subbase with two positions
Quick coupling connections directly integrated in sub base
Integrated and optimized electrical connection system.
IP65 protection grade as standard

Construction characteristics

Body	Technopolymer
Spacer	Technopolymer
Spacers	NBR
Piston seals	NBR
Springs	AISI 303 stainless steel
Operators	Technopolymer
Pistons	Technopolymer
Spools	AISI 303 stainless steel

Functions

SV 5/2 MONOSTABLE SOLENOID-SPRING
SV 5/2 MONOSTABLE SOLENOID-DIFFERENTIAL
SV 5/2 BISTABLE SOLENOID-SOLENOID
SV 5/3 C.C. SOLENOID-SOLENOID
SV 2x3/2 N.C.-N.C. (=5/3 O.C.) SOLENOID-SOLENOID
SV 2x3/2 N.O.-N.O. (=5/3 P.C.) SOLENOID-SOLENOID
SV 2x3/2 N.C.-N.O. SOLENOID-SOLENOID
SV 2x3/2 N.O.-N.C. SOLENOID-SOLENOID

Technical characteristics

Voltage	24VDC \pm 10% PNP (NPN and AC on request)
Pilot consumption	0,5 Watt
Pilot working pressure (12-14)	from 2,5 to 7 bar max.
Valve working pressure [1]	from vacuum to 10 bar max.
Operating temperature	from -5°C to +50°C
Protection degree	IP40
Life (standard operating conditions)	50000000
Fluid	Filtered air. No lubrication needed, if applied it shall be continuous

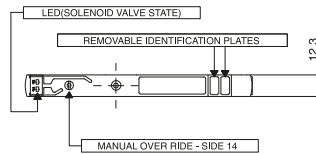
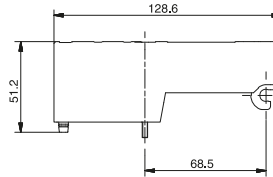
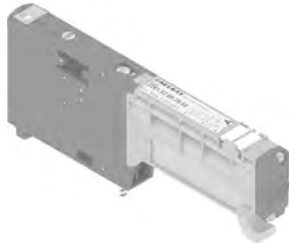
Solenoid - Spring

Coding: 2241.52.00.39.

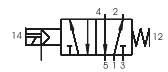
Operational characteristics	
Fluid	Filtered air. No lubrication needed, if applied it shall be continuous
Working pressure (bar)	From vacuum to 10
Pressure range (bar)	2,5 ÷ 7
Temperature °C	-5 ÷ +50
Flow rate at 6 bar with $\Delta p=1$ (NI/min)	550
Response time according to ISO 12238, activation time (ms)	12
Response time according to ISO 12238, deactivation time (ms)	20

V	VOLTAGE
02	= 24 VDC PNP
SHORT FUNCTION CODE "A"	
Weight 67 g	

Shifting time of pneumatic directional control valves or moving parts, logic devices were measured in accordance to ISO 12238:2001



Flow rate at 6 bar with $\Delta p=1$ (NI/min) with Base cod. 2248.01 tube Ø8= 550



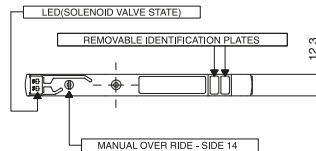
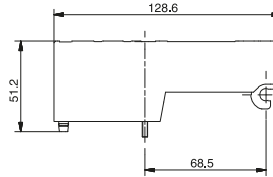
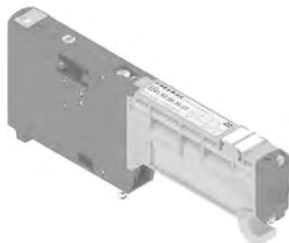
Solenoid-Differential

Coding: 2241.52.00.36.

Operational characteristics	
Fluid	Filtered air. No lubrication needed, if applied it shall be continuous
Working pressure (bar)	From vacuum to 10
Pressure range (bar)	2,5 ÷ 7
Temperature °C	-5 ÷ +50
Flow rate at 6 bar with $\Delta p=1$ (NI/min)	550
Response time according to ISO 12238, activation time (ms)	20
Response time according to ISO 12238, deactivation time (ms)	25

V	VOLTAGE
02	= 24 VDC PNP
SHORT FUNCTION CODE "B"	
Weight 67 g	

Shifting time of pneumatic directional control valves or moving parts, logic devices were measured in accordance to ISO 12238:2001



Flow rate at 6 bar with $\Delta p=1$ (NI/min) with Base cod. 2248.01 tube Ø8= 550



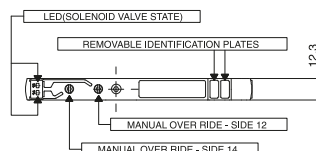
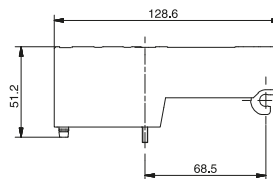
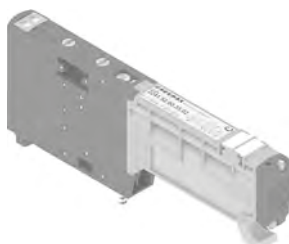
Solenoid-Solenoid

Coding: 2241.52.00.35.

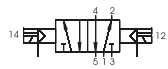
Operational characteristics	
Fluid	Filtered air. No lubrication needed, if applied it shall be continuous
Working pressure (bar)	From vacuum to 10
Pressure range (bar)	2,5 ÷ 7
Temperature °C	-5 ÷ +50
Flow rate at 6 bar with $\Delta p=1$ (NI/min)	550
Response time according to ISO 12238, activation time (ms)	10
Response time according to ISO 12238, deactivation time (ms)	10

V	VOLTAGE
02	= 24 VDC PNP
SHORT FUNCTION CODE "C"	
Weight 67 g	

Shifting time of pneumatic directional control valves or moving parts, logic devices were measured in accordance to ISO 12238:2001



Flow rate at 6 bar with $\Delta p=1$ (NI/min) with Base cod. 2248.01 tube Ø8= 550





Solenoid valves manifold Series 2200 "OPTYMA-Sc"

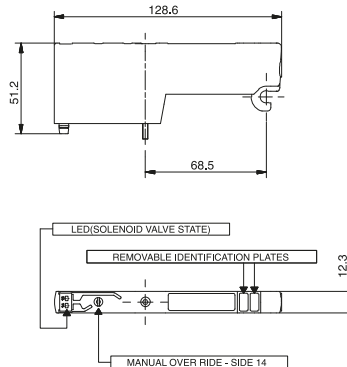
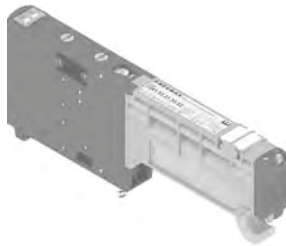
Solenoid-Solenoid 5/3 (Closed centres)

Coding: 2241.53.31.35.

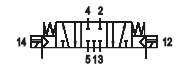
Operational characteristics	
Fluid	Filtered air. No lubrication needed, if applied it shall be continuous
Working pressure (bar)	From vacuum to 10
Pressure range (bar)	2,5 ÷ 7
Temperature °C	-5 ÷ +50
Flow rate at 6 bar with $\Delta p=1$ (NI/min)	400
Response time according to ISO 12238, activation time (ms)	15
Response time according to ISO 12238, deactivation time (ms)	20

Shifting time of pneumatic directional control valves or moving parts, logic devices were measured in accordance to ISO 12238:2001

	VOLTAGE
	02 = 24 VDC PNP
SHORT FUNCTION CODE "E"	
Weight 83 g	



Flow rate at 6 bar with $\Delta p=1$ (NI/min) with Base cod. 2248.01. tube $\varnothing 8=400$



Solenoid-Solenoid 2x3/2

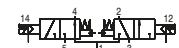
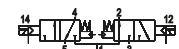
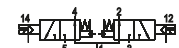
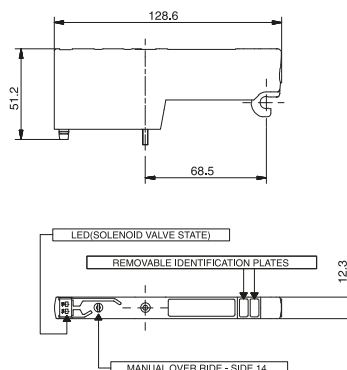
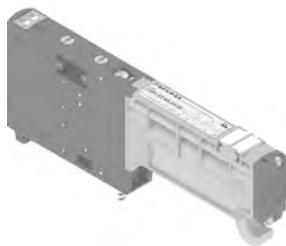
Coding: 2241.62. .35.

Operational characteristics	
Fluid	Filtered air. No lubrication needed, if applied it shall be continuous
Working pressure (bar)	From vacuum to 10
Pressure range (bar)	$\geq 3 + (0,2 \times \text{Inlet pressure})$
Temperature °C	-5 ÷ +50
Flow rate at 6 bar with $\Delta p=1$ (NI/min)	420
Response time according to ISO 12238, activation time (ms)	15
Response time according to ISO 12238, deactivation time (ms)	25

Shifting time of pneumatic directional control valves or moving parts, logic devices were measured in accordance to ISO 12238:2001

	FUNCTION
	44 = NC-NC (5/3 Open centres)
	45 = NC-NO (normally closed-normally open)
	54 = NO-NC (normally open-normally closed)
	55 = NO-NO (5/3 Pressured centres)
	VOLTAGE
	02 = 24 VDC PNP

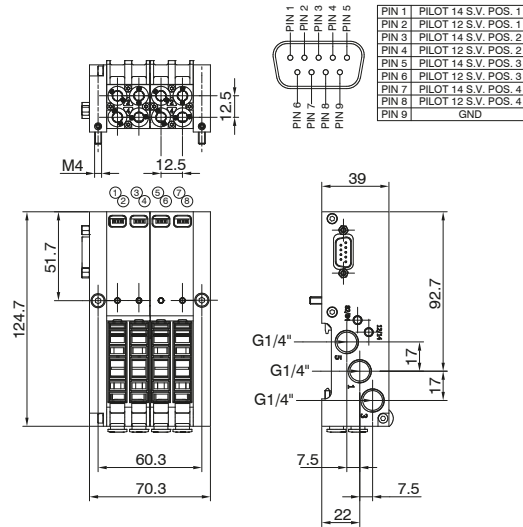
SHORT FUNCTION CODE:
NC-NC (5/3 Open centres) = "F"
NO-NO (5/3 Pressured centres) = "G"
NC-NO = "H"
NO-NC = "I"
Weight 75 g



Flow rate at 6 bar with $\Delta p=1$ (NI/min) with Base cod. 2244.01. tube $\varnothing 4=140$
Flow rate at 6 bar with $\Delta p=1$ (NI/min) with Base cod. 2246.01. tube $\varnothing 6=360$
Flow rate at 6 bar with $\Delta p=1$ (NI/min) with Base cod. 2248.01. tube $\varnothing 8=420$

Bases only kit

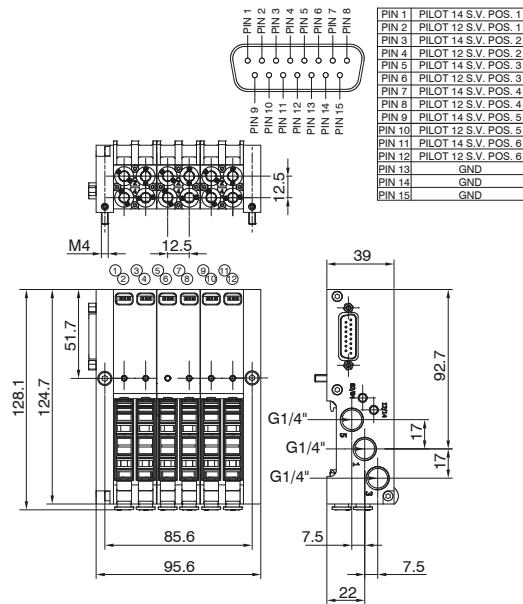
Coding: CMPVCP0



VERSION	
V	9E = 9 poles kit
	1E = 15 poles kit
TUBE DIAMETER	
44	= Ø4-4 (9 poles)
66	= Ø6-6 (9 poles)
C	88 = Ø8-8 (9 poles)
444	= Ø4-4-4 (15 poles)
666	= Ø6-6-6 (15 poles)
888	= Ø8-8-8 (15 poles)

Weight 400 g

CMP9ECP0



Weight 500 g

CMP1ECP0

Available bases

Tube Ø4

Tube Ø6

Tube Ø8

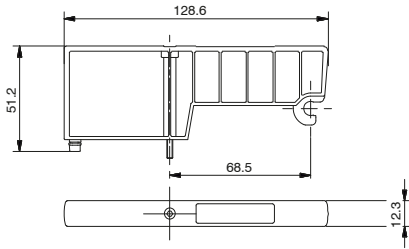




Closing plate

Coding: 2240.00

Operational characteristics	
Fluid	Filtered air. No lubrication needed, if applied it shall be continuous
Working pressure (bar)	From vacuum to 10
Temperature °C	-5 ÷ +50



Weight 30 g
SHORT FUNCTION CODE "T"

Cable complete with connector, 9 Poles, IP40

Coding: 2400.09.L.00



L	CABLE LENGTH
	03 = 3 meters
	05 = 5 meters
	10 = 10 meters

Cable complete with connector, 15 Poles, IP40

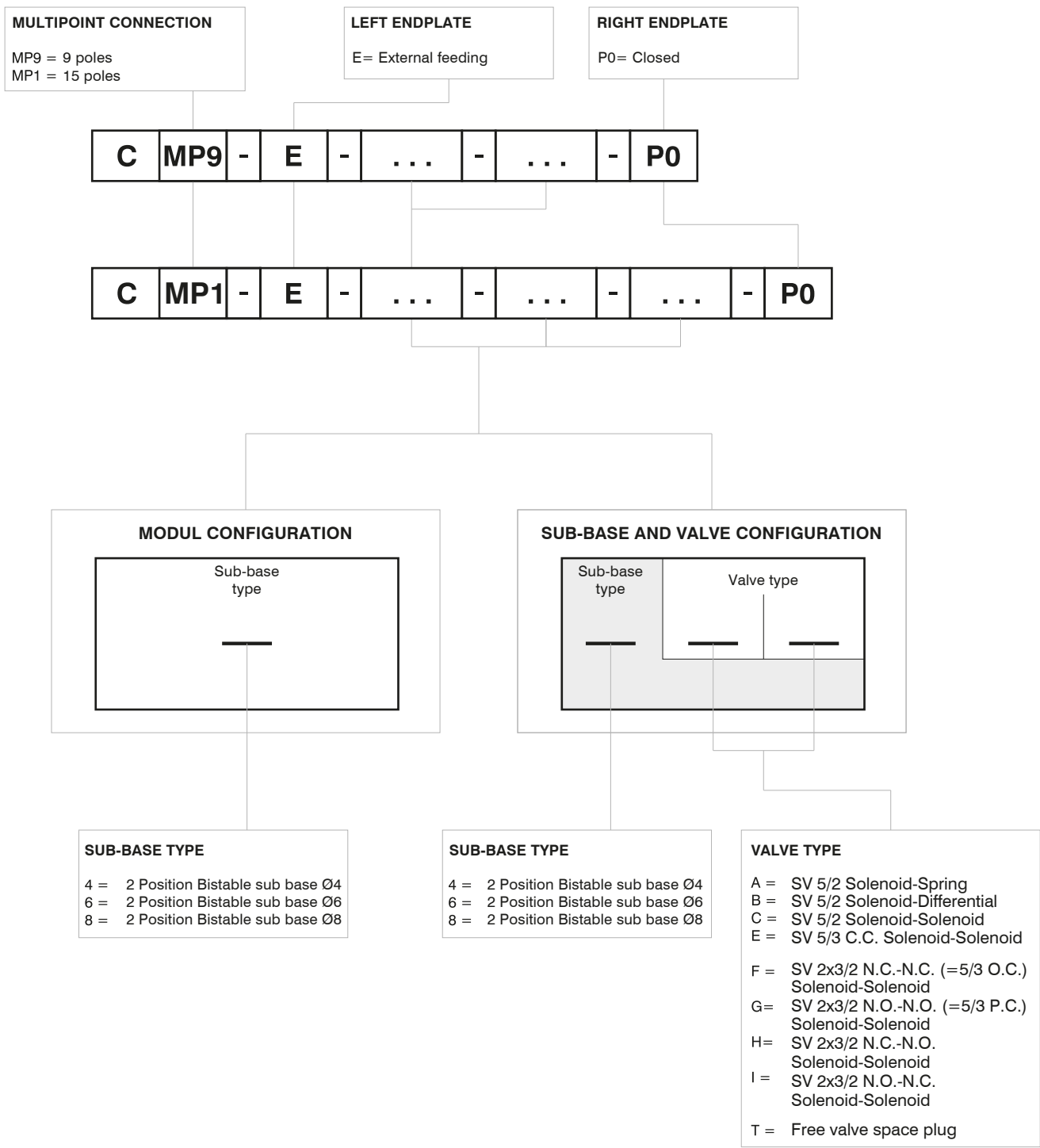
Coding: 2400.15.L.00




L	CABLE LENGTH
	03 = 3 meters
	05 = 5 meters
	10 = 10 meters



Manifold layout configuration



Series 2200 OPTYMA-Sc solenoid valve manifolds managed by multipoint connection are
"well tried components"

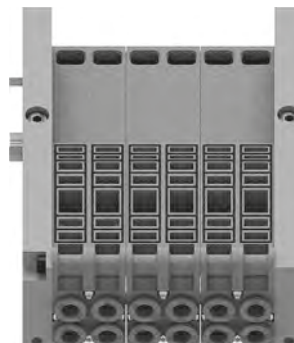
	Well-tryed component	<ul style="list-style-type: none">- The product is well-tryed product for a safety-related application according to ISO 13849-1.- The relevant basic and well-tryed safety principles according ISO 13849-2 for this product are fulfilled.- The suitability of the product for a precise application must be verified and confirmed by the user.
B_{10d}	50.000.000	



Example shown : CMP9E68P0
Manifold with external supply, 9 poles multipolar, base Ø6, base Ø8



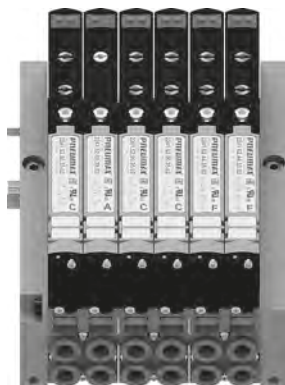
To be completed with solenoid valves before use



Example shown : CMP1E666P0
Manifold with external supply, 15 poles multipolar, base Ø6, base Ø6, base Ø6



To be completed with solenoid valves before use



Example shown : CMP1E6CA6CC6FFP0
Manifold with external supply, 15 poles multipolar, base Ø6 with solenoid valves, base Ø6 with solenoid valves, base Ø6 with solenoid valves



Two signals per position, independently of the mounted solenoid valve



Example shown : CMP9E6TF6ACP0
Manifold with external supply, 9 poles multipolar, base Ø6 with solenoid valves, base Ø6 with solenoid valves



Two signals per position, independently of the mounted solenoid valve

Supply ports and maximum possible size according to valves used

