



► High sensitive pressure regulator with pneumatic pilot



- Accurate capacity to maintain set pressure
- Sensitivity combined with high relieving rates
- High flow rate with extremely low pressure drop
- Aluminium body
- Construction with controlled refuel
- Atex certification (II 2GD) on request

Technical characteristics	Size
	Size 3
Body and connections type	Aluminium body, integrated aluminium connections
IN / OUT connections	G1/2"
Assembly configuration	Stand alone
Assembly position	Indifferent
Fluid	20 $\mu$ filtered air and preferably non lubricated
Air flow with inlet pressure 10 bar (NI/min)	5
Pressure measurement	G1/8" Pressure gauge connection port
Max. fittings torque IN / OUT connections	G1/2" metal: 30

Operational characteristics	Size
	Size 3
Maximum working pressure (bar)	10
Minimum working pressure (bar)	0,5
Working temperature (°C)	-5 ÷ +50

Weights	Size
	Size 3
Aluminium body version (g)	970

2

AIR TREATMENT

## Order codes

17 **3P2B** .0010

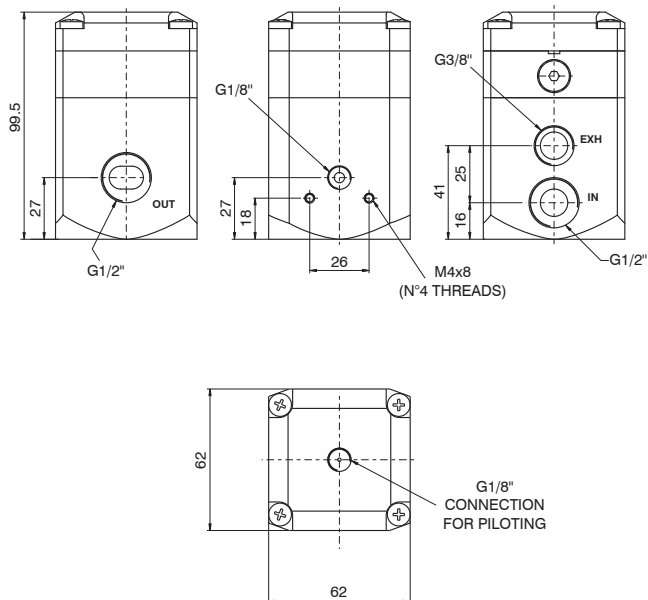
### Size, body and connections

**3P2B** : Aluminium body, connections G1/2" (only for size 3)

### Example: 173P2B.0010

Size 3 high sensitive pressure regulator with pneumatic pilot, aluminium body, G1/2" connections

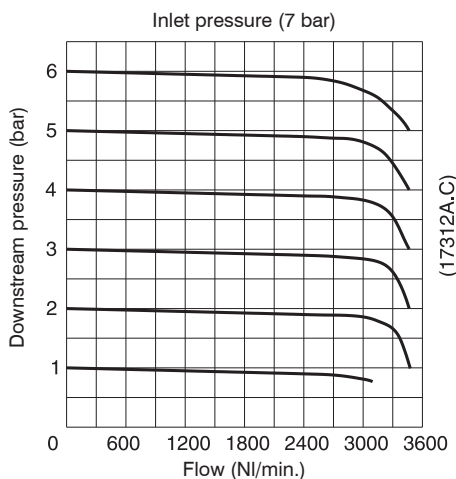
## Dimensions



Size 3

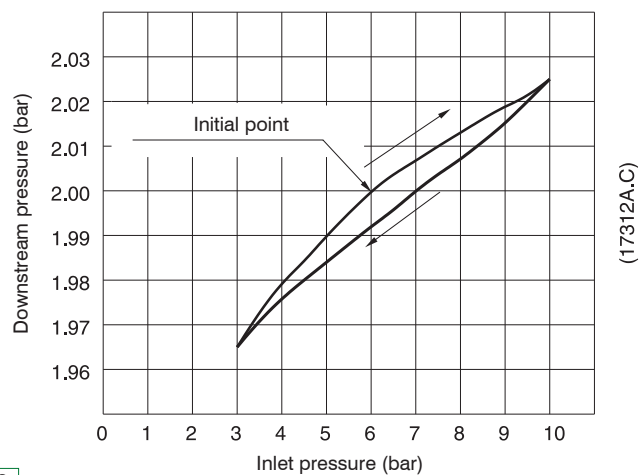
## Characteristic curves

### Flow rate curves



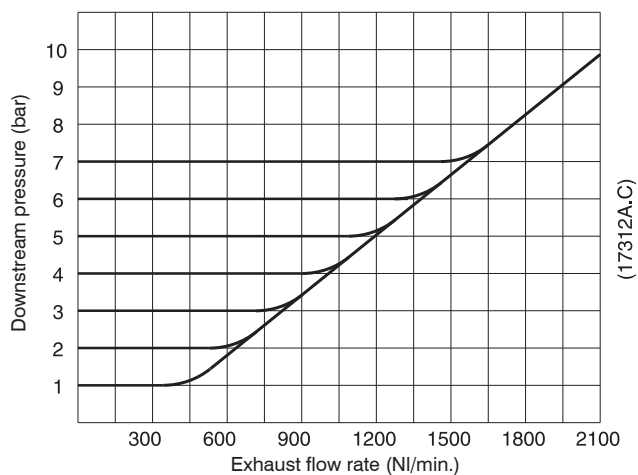
Size 3

### Adjustment characteristic



Size 3

### Exhaust flow rate curves



Size 3