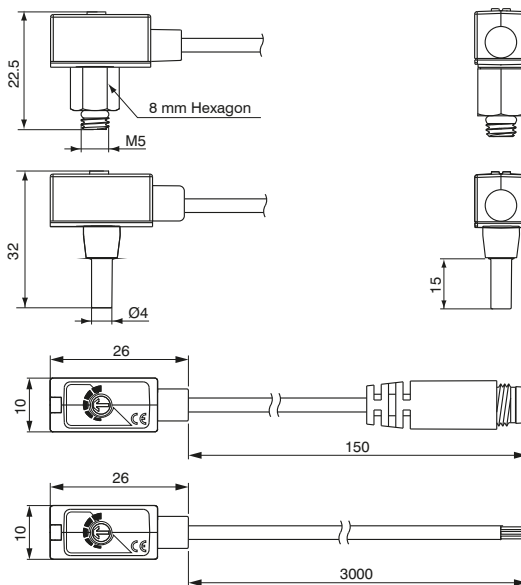


Mini digital pressure switch



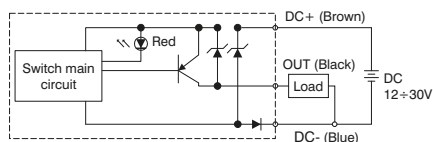
Ordering code	
DS.10.P.B.C.L.O	
CONNECTION	
C	F4=Male M5
	R4=Plug-in connection Ø4
CABLE LENGTH	
L	A=150 mm *
	E=3000 mm **
OPTIONS	
O	0=Without connector
	1=With connector M8 male 3 Pin

* only with M8 connector
** only without connector

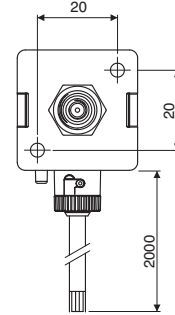
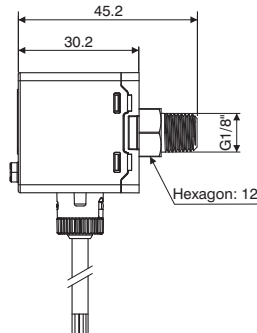
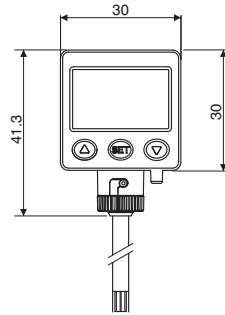
Technical features

Working pressure range		0 - 0.6 mPa
Regulation pressure range		0 - 0.6 mPa
Maximum supported pressure		1.5 mPa
Allowed fluids		Air, non-corrosive gases, non-combustible gases
Supply voltage		From 12 to 30 VDC $\pm 10\%$
Current consumption		$\leq 10\text{mA}$
Digital output		PNP N.O. 1 outputs Maximum load current: 80mA Maximum supply voltage: 30VDC Voltage drop: $\leq 0.8\text{V}$
Repeatability (Digital output)		$\pm 1\%$ Full Scale
Digital output	Type of hysteresis	fixed
	Hysteresis	3% Full Scale max.
Response time		1ms
Protection from short circuit at output		Present
Method of setting threshold		Adjustable, trimmer
Indicator		LED red (output)
Ingress protection rating	Protection class	IP40
	Ambient temperature	Operational: 0 - 60°C, Storage: -20 - 70°C (without ice or condensation)
	Ambient humidity	Operational/Storage: 35 - 85% (without condensation)
	Vibration	Total amplitude 1.5mm., 10Hz-55Hz-10Hz scanning for 1 minute, 2 hours in each direction of X, Y and Z
Temperature characteristics		980m/s ² (100G), 3 times in each direction of X, Y and Z
Type of connection		$\pm 2\%$ Full Scale in a range between 0 - 50°C
Electrical cable		Male M5x0.8, Plug-in connection Ø4
Weight		Oilproof cable, 3 wires (0.18mm ²), Ø2.6mm
		Approximately 50 gr. (with 3 metres of cable)

Output circuit wiring scheme



Panel-mounted digital pressure switch

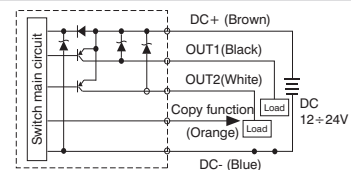
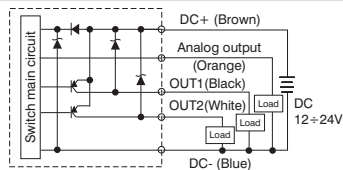


Ordering code	
DS.45.P.U.F3.D.0	
OUTPUTS	
U	E=2 PNP outputs + Analog output (4 / 20 mA)
	L=2 PNP outputs + copy function

Technical features

Working pressure range		0.000 - 1.000 mPa
Regulation pressure range		-0.100 - 1.000 mPa
Maximum supported pressure		1.5 mPa
Allowed fluids		Air, non-corrosive gases, non-combustible gases
Pressure calibration sensitivity	kPa	0.1
	kgf/cm ²	0.001
	bar	0.001
	psi	0.01
	InHg	0.1
Supply voltage		From 12 to 24 VDC
Current consumption		≤40mA (without load)
Digital output		PNP N.O. 2 outputs Maximum load current: 125mA Maximum supply voltage: 24VDC Voltage drop: ≤1.5V
Repeatability (Digital output)		± 0.2% Full Scale ± 1 digit
Digital output	Type of hysteresis	Settable
	Hysteresis	from 0.001 to 0.008 bar
Response time		≤2,5 ms (anti-interference function: 25ms, 100ms, 250ms, 500ms, 1000ms and 1500ms selectable)
Protection from short circuit at output		Present
Display		Display with 3 1/2 digits (red/Green)
Indicator precision		±2% F. S. ± 1 digit
Indicator		LED Orange (output1) LED Orange (output2)
Analog output		Output current: 4÷20mA ±2.5% F. S. Linearity: ±1% F. S. Maximum load resistance: 250Ω supply at 12V and 600Ω supply at 24V Minimum load resistance: 50Ω
Ingress protection rating	Protection class	IP65
	Ambient temperature	Operational: 0 - 50°C, Storage: -10 - 60°C (without ice or condensation)
	Ambient humidity	Operation/Storage: 35 - 85% (without condensation)
	Supported voltage	1000VAC in 1min. (between body and cable)
	Insulation resistance	50MΩ (at 500VDC, between body and cable)
	Vibration	Total amplitude 1.5mm or 10G, 10Hz-55Hz-10Hz scanning for 1 minute, 2 hours in each direction of X, Y and Z
Impacts/shocks		100m/s ² (10G), 3 times in each direction of X, Y and Z
Temperature characteristics		±2.5% Full Scale in a range between 0 - 50°C
Type of connection		G1/8" (BSPP), M5 female
Electrical cable		Oil resistant cable (internal 0.15mm ²)
Weight		Approximately 86 gr. (with 2 metres of cable)

Output circuit wiring scheme

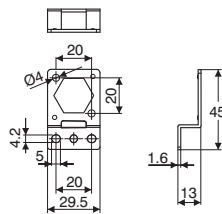


Accessories

Fastening bracket



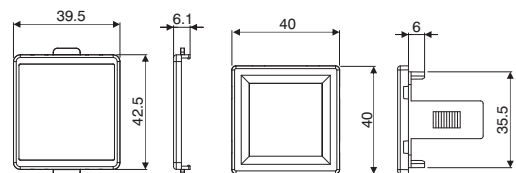
Ordering code
DS.BT10



Panel mount adapter



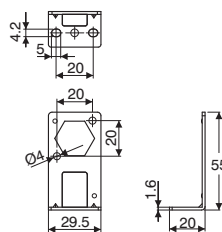
Ordering code
DS.PAE



Fastening bracket



Ordering code
DS.BT11



Panel mount adapter with screen protection



Ordering code
DS.PAF

