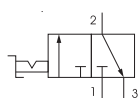


Shut-off valve


- ▶ 3/2 N.C. poppet valve for opening and exhausting the circuit
- ▶ Allows to pneumatically supply the part of the system downstream of the valve
- ▶ Manual adjusting lockable handle (in shut-off position) with a maximum of three pad-locks
- ▶ Atex certification (II 2GD o II 3GD) on request



Technical characteristics	Size			
	Size 1	Size 2	Size 3	Size 4
Body and connections type	Zinc alloy body, Zinc alloy integrated connections Technopolymer body, metal connections	Aluminium body, integrated aluminium connections		
Operated type	Manual			
IN / OUT connections	G1/4"	G3/8"	G1/2"	G1"
Discharge connections	G1/8"	G1/4"	G3/8"	G1/4"
Assembly configuration	Stand alone Panel mounted with M4 screws	Stand alone Panel mounted with M5 screws	Stand alone Panel mounted with M6 screws	Stand alone Panel mounted with M8 screws
Assembly position	Indifferent			
Max. fittings torque IN / OUT connections	G1/4" metal: 20	G3/8" metal: 25	G1/2" metal: 30	G1"metal: 35

Operational characteristics	Size			
	Size 1	Size 2	Size 3	Size 4
Maximum working pressure (bar)	13			10
Minimum working pressure (bar)	0,5			
Nominal flow rate at 6 bar with $\Delta p=1$ (NI/min)	1000	2100	2500	8000
Working temperature (°C)	-5 ÷ +50			

Weights	Size			
	Size 1	Size 2	Size 3	Size 4
Zinc alloy body version (g)	280	/	/	/
Technopolymer body version (g)	155	/	/	/
Aluminium body version (g)	/	380	550	1600

Order codes

17 330 . A

Size, body and connections

030 : Zinc alloy body, connections G1/4" (only for size 1)
130 : Technopolymer body, connections G1/4" (only for size 1)
230 : Aluminium body, connections G3/8" (only for size 2)
330 : Aluminium body, connections G1/2" (only for size 3)
430 : Aluminium body, connections G1" (only for size 4)

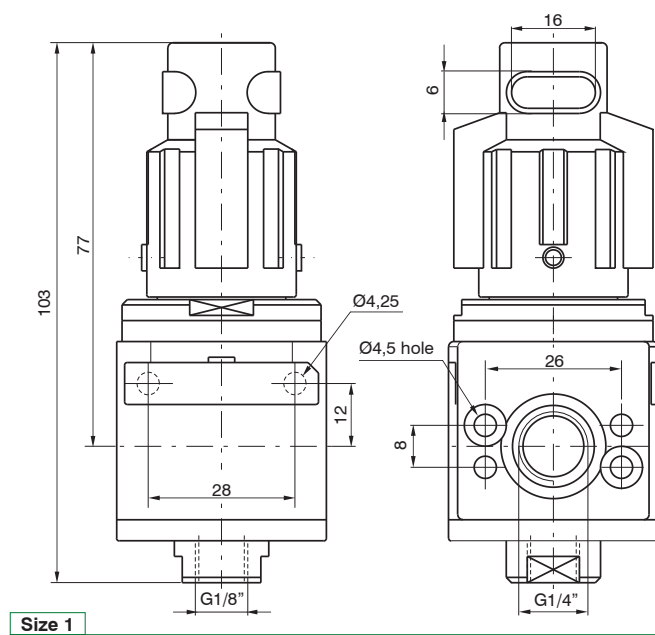
Type

A : Not lockable handle
B : Lockable handle

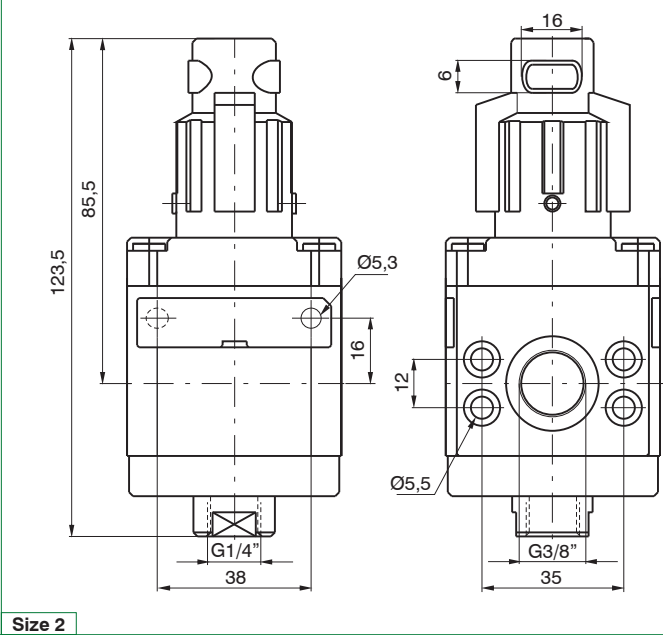
Example: 17330.A

Shut-off valve Size 3, Aluminium body, G1/2" connections, with not lockable handle

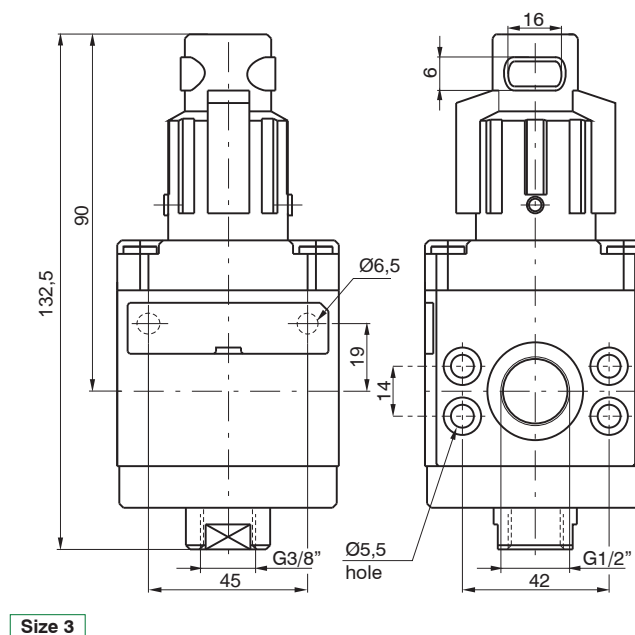
Dimensions



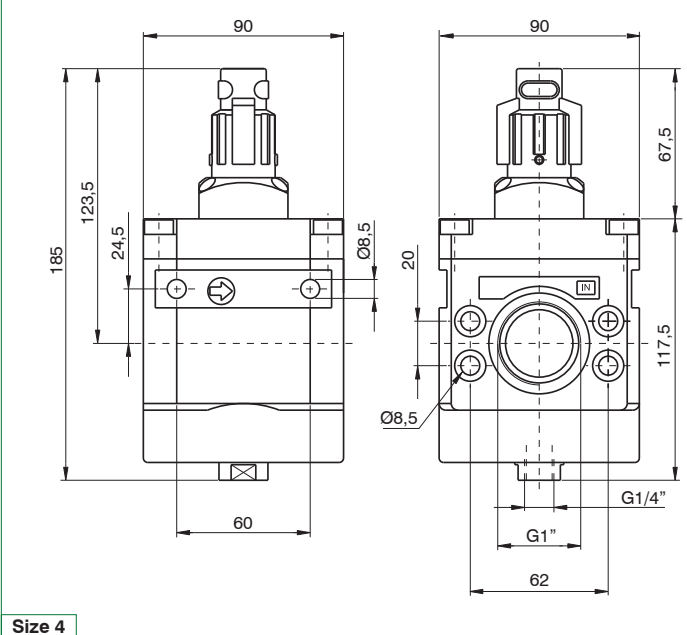
Size 1



Size 2



Size 3



Size 4